



Statement of Needs: Challenges to Making the ConnectSF Vision a Reality

About ConnectSF: Partnership and Collaboration

ConnectSF is a multi-agency process to build an effective, equitable, and sustainable transportation system for San Francisco's future



**San Francisco
County Transportation
Authority**

ConnectSF Vision

About ConnectSF: Goals



Equity



**Environmental
Sustainability**



**Economic
Vitality**

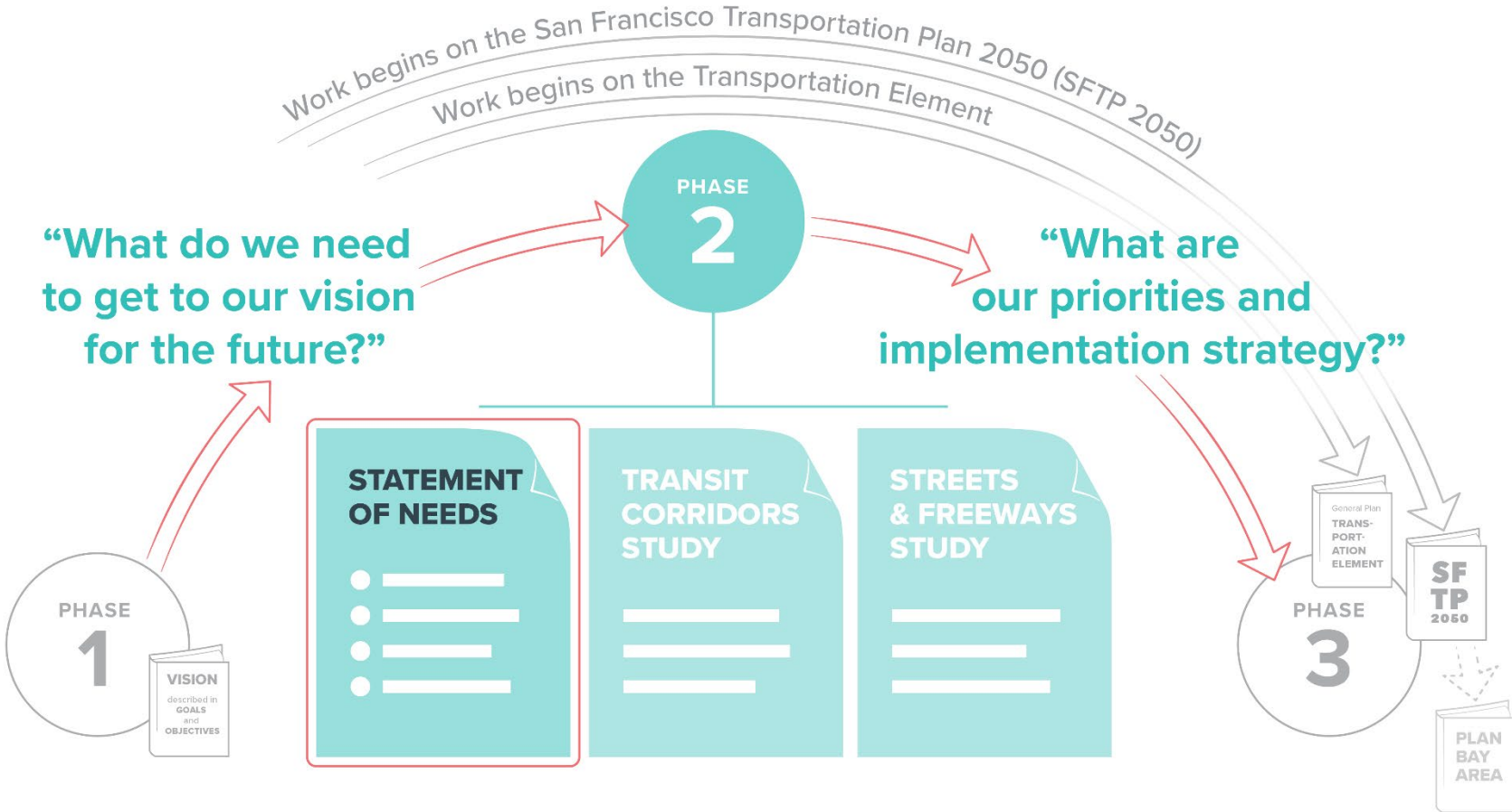


**Safety &
Livability**



**Accountability
and Engagement**

About ConnectSF: Overall Process





Key Question for Statement of Needs

What challenges do we need to address to get to our vision for the future?

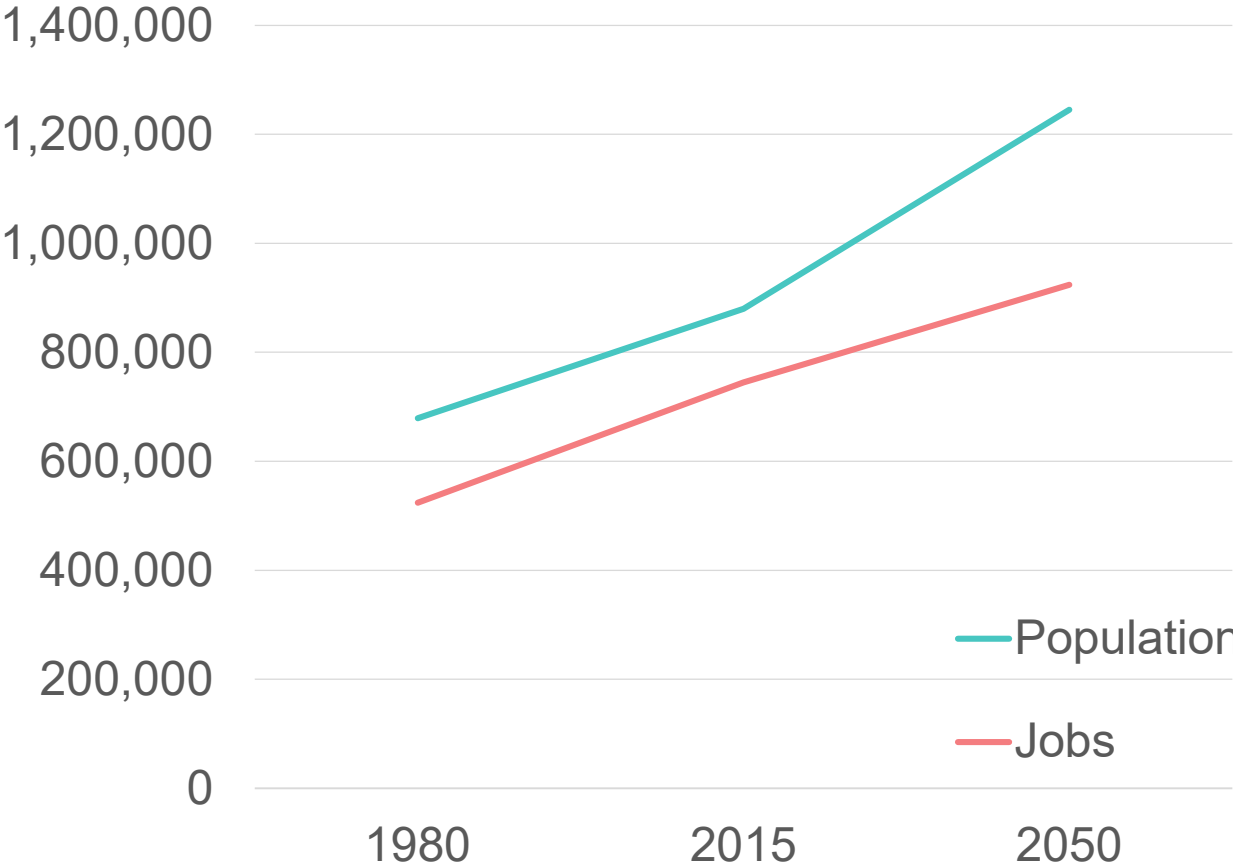
We Will Continue to Grow

	San Francisco		
	2015	2050	% Change
Population	880,000	1,245,000	29%
Jobs	745,000	924,000	24%

	Bay Area		
	2015	2050	% Change
Population	7,330,000	10,350,000	41%
Jobs	3,798,000	5,059,000	33%

We Will Continue to Grow

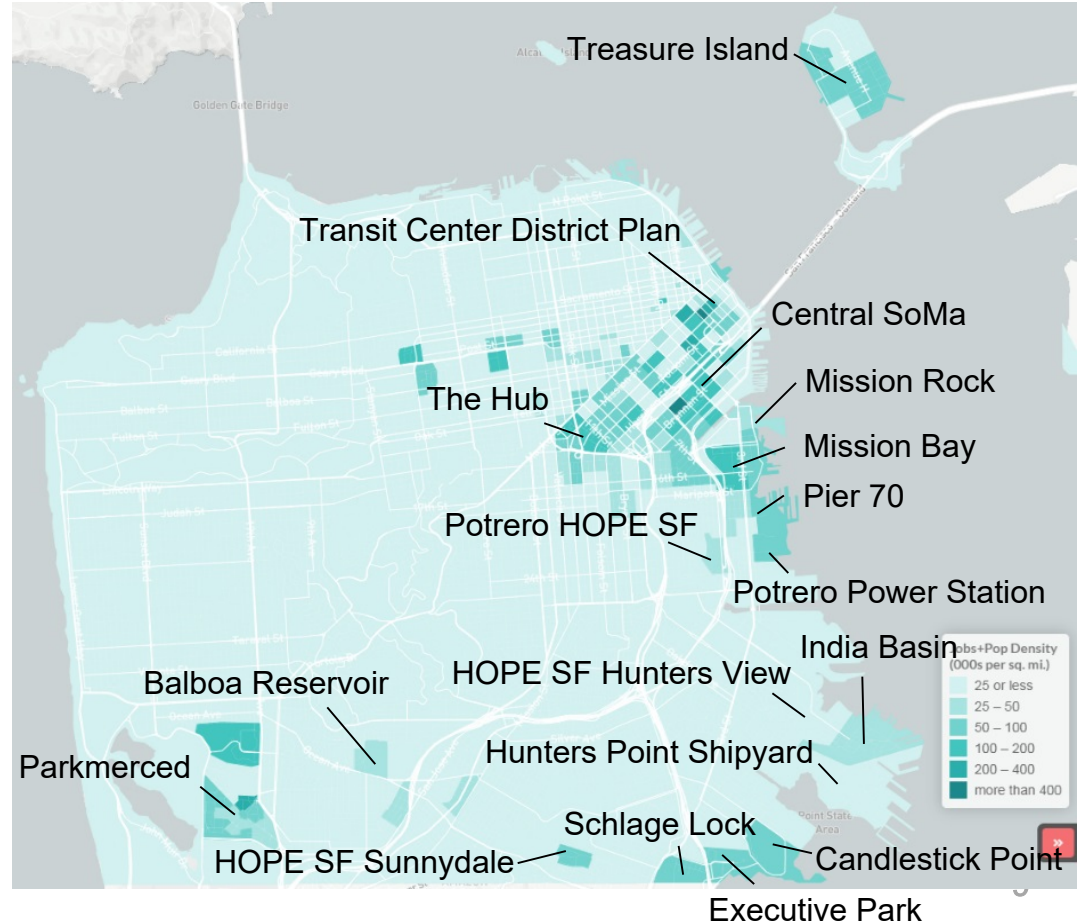
SF Population and Employment 1980-2050



Where Are We Growing?

2015-2050 Change in SF Population and Employment Density

Based on adopted plans, policies, and entitlements



Transportation Network in Model

What is included in 2015 network:

- 2015 local and regional transit network
- 2015 bike network
- 2015 roads, freeways, tolls, parking costs
- TNCs (e.g., Uber, Lyft)

What else is included in 2050 network:

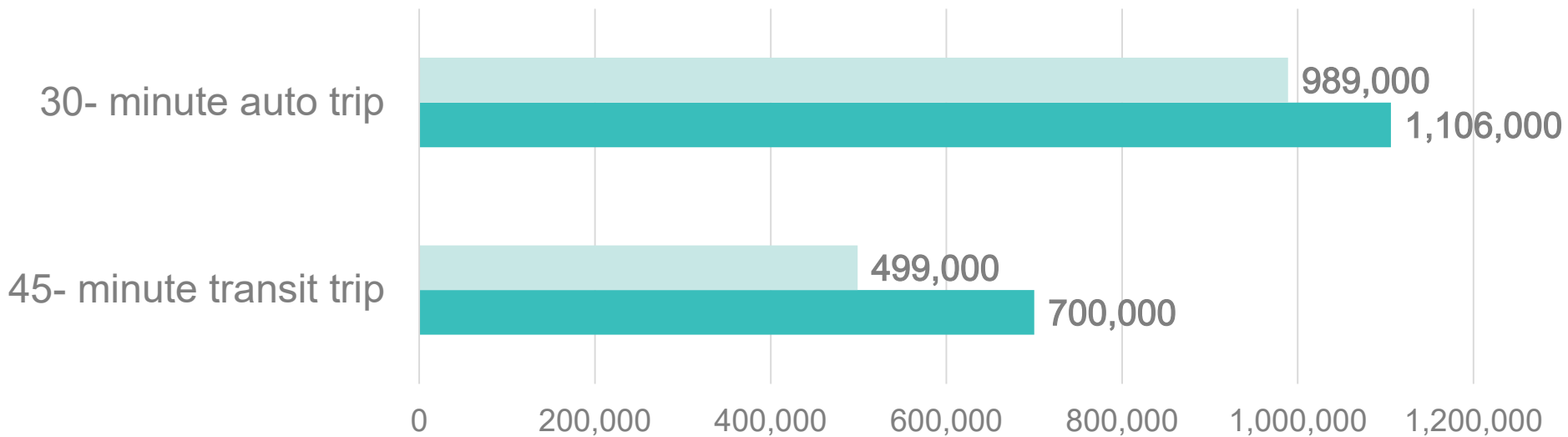
- Planned local and regional transit projects (e.g. bus rapid transit [BRT], Downtown Extension)
- Planned bike network projects

What is not included in 2050 network:

- Congestion pricing
- New concepts e.g. second transbay BART crossing

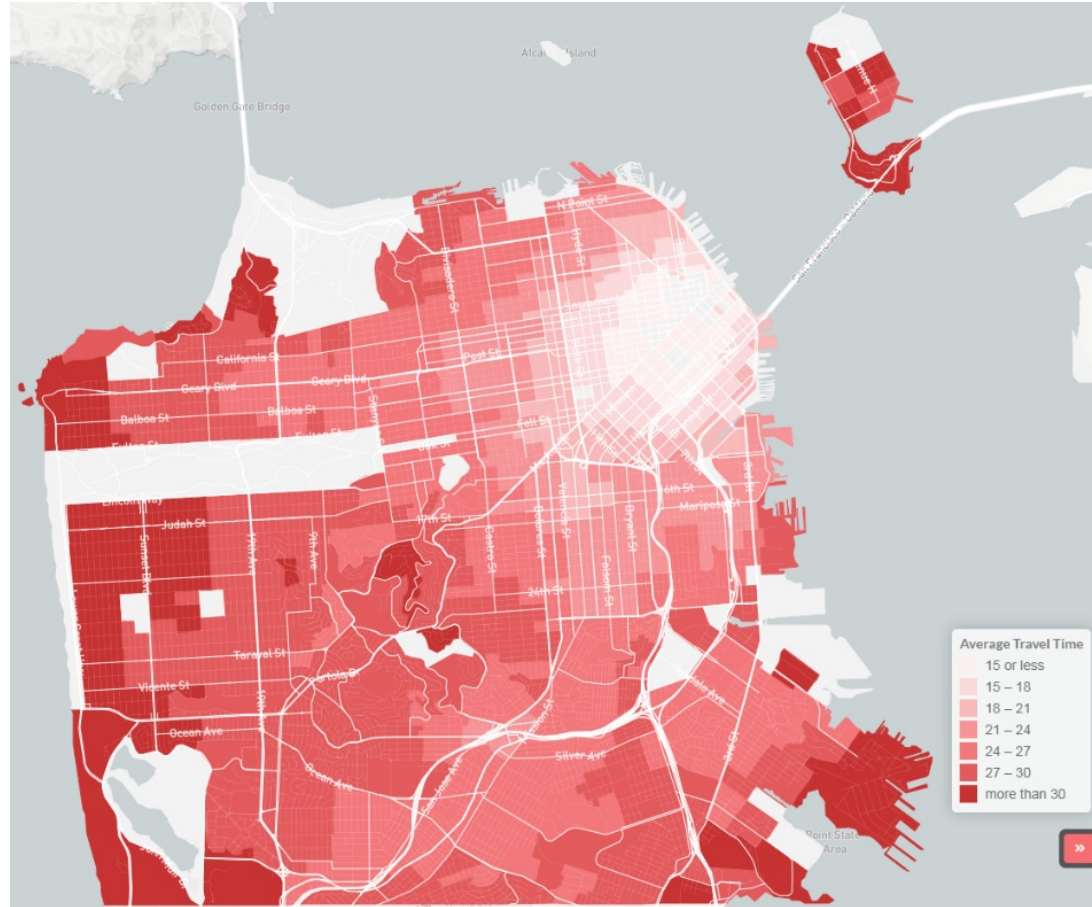
More Jobs are Accessible

Number of Jobs Accessible by Mode



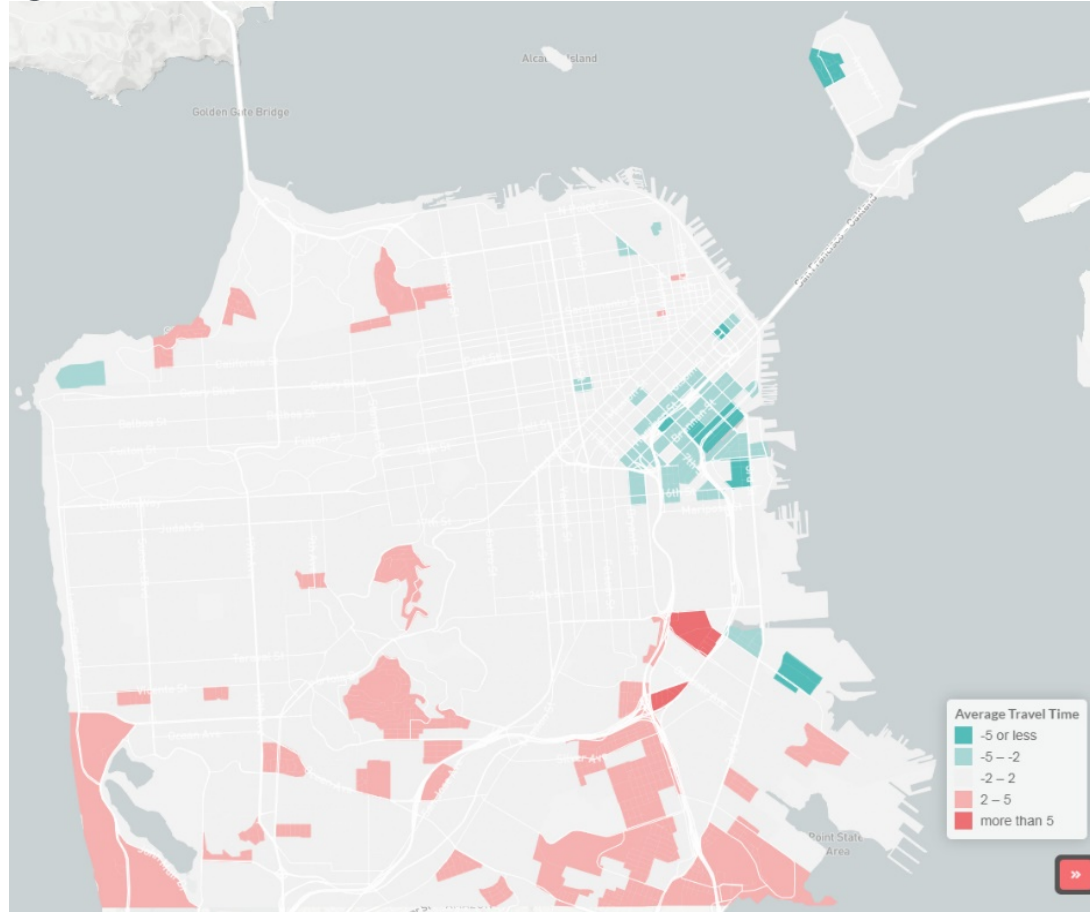
Commute Times Stay the Same

2050 Average
Commute Time
(minutes)



Commuter Times Stay the Same

2015-2050 Change
in Average Commute
Time (minutes)



Projected Outcomes are Unequal

CoCs are Communities of Concern

Commute Times (minutes)

	2015	2050	% Change
CoC	21.7	23.0	6%
Non-CoC	25.1	25.0	0%

Share of Population with Access to High - Quality Transit

	2015	2050	% Change
CoC	94.1%	90.5%	-3.9%
Non-CoC	85.3%	88.6%	+3.9%

Projected Outcomes are Unequal

CoCs are Communities of Concern

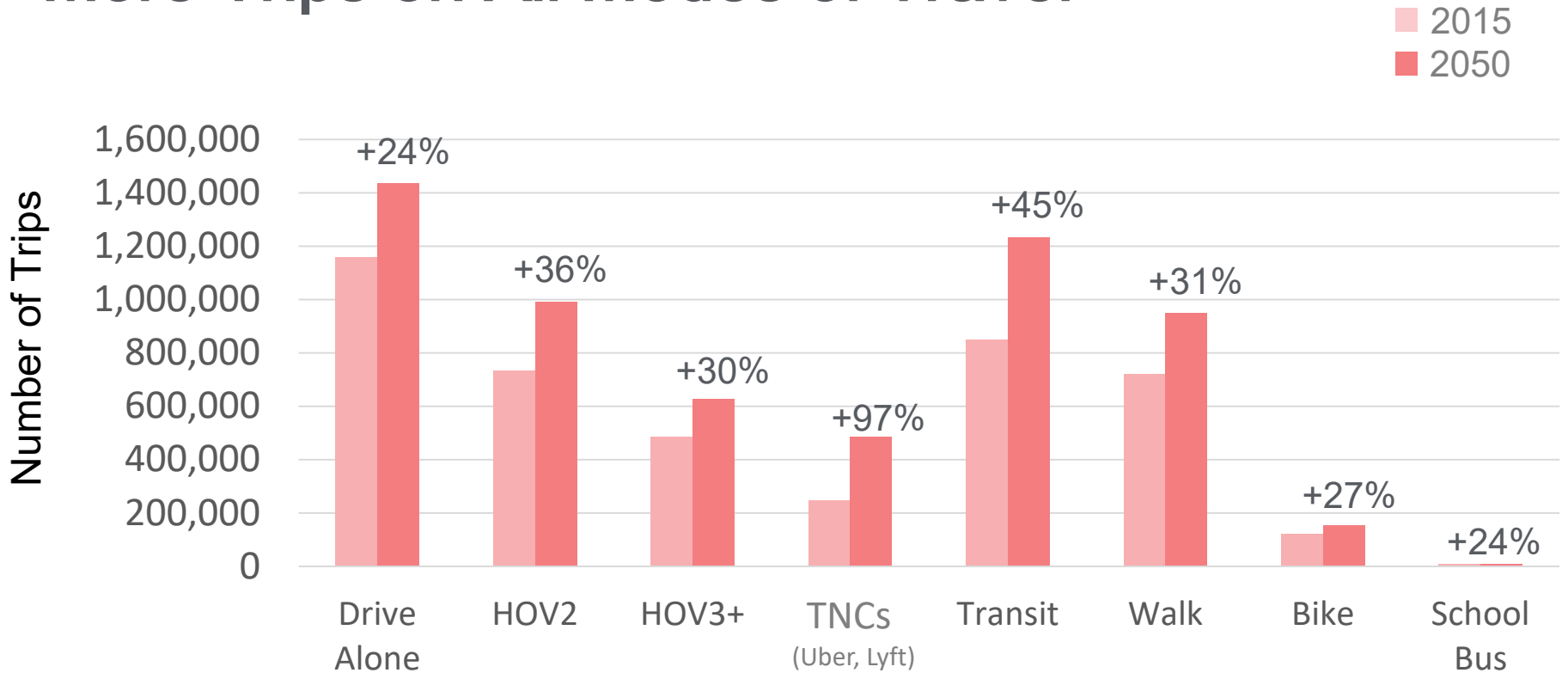
Number of Jobs Accessible by 45 - minute Trip on Transit

	2015	2050	% Change
CoC	512,800	674,000	31%
Non-CoC	492,300	712,000	45%

Number of Jobs Accessible by 30 - minute Trip by Car

	2015	2050	% Change
CoC	996,700	1,072,600	8%
Non-CoC	985,800	1,122,300	14%

More Trips on All Modes of Travel



Personal Miles Driven Increase for SF Residents

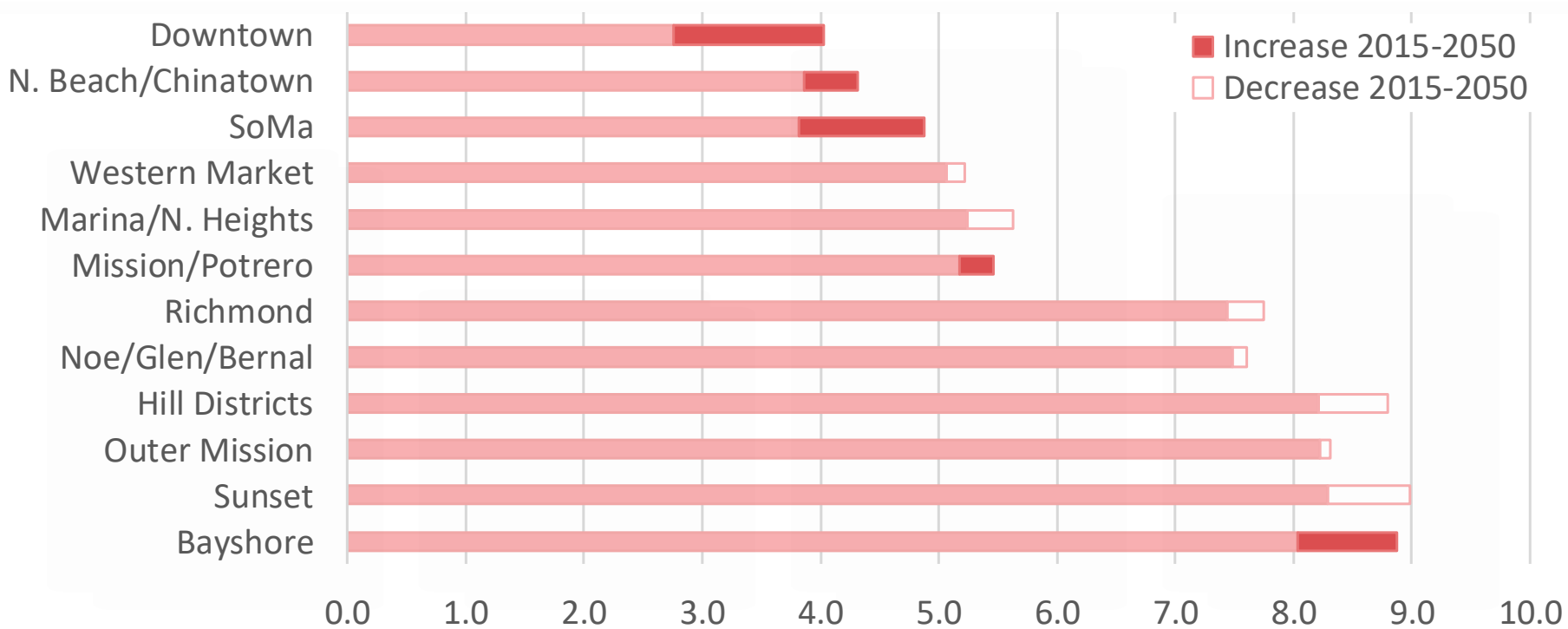
Change in Personal Miles Driven per Capita 2015 -2050

	2015	2050	% Change
San Francisco	6.5	6.6	1%
Bay Area	16.4	14.9	-9%

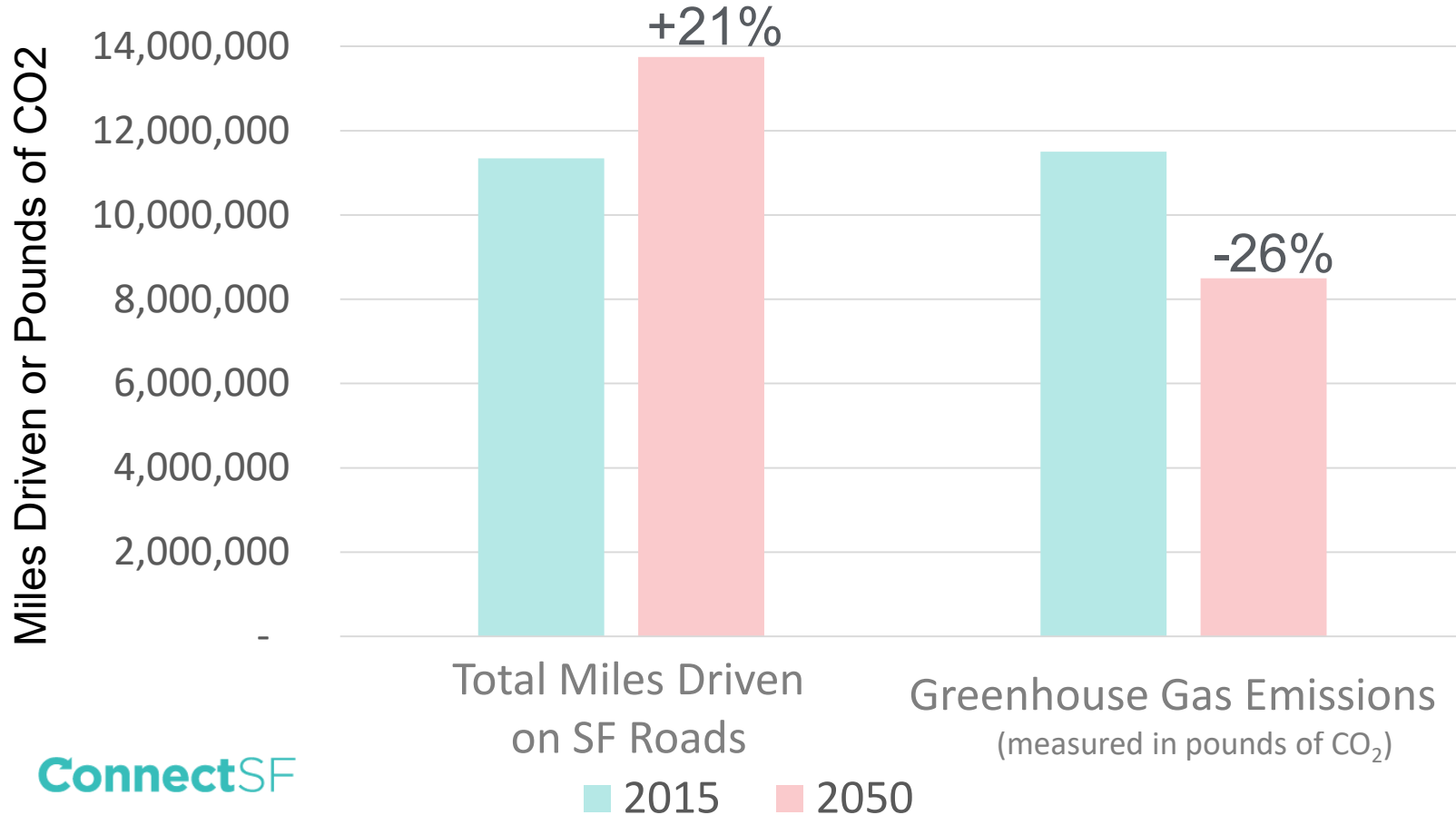
Personal Miles Driven are the number of miles a person travels in a car whether it is their own car, carpool or TNC.

Personal Miles Driven Increase

Change in Personal Miles Driven per Capita by District (2015 -2050)

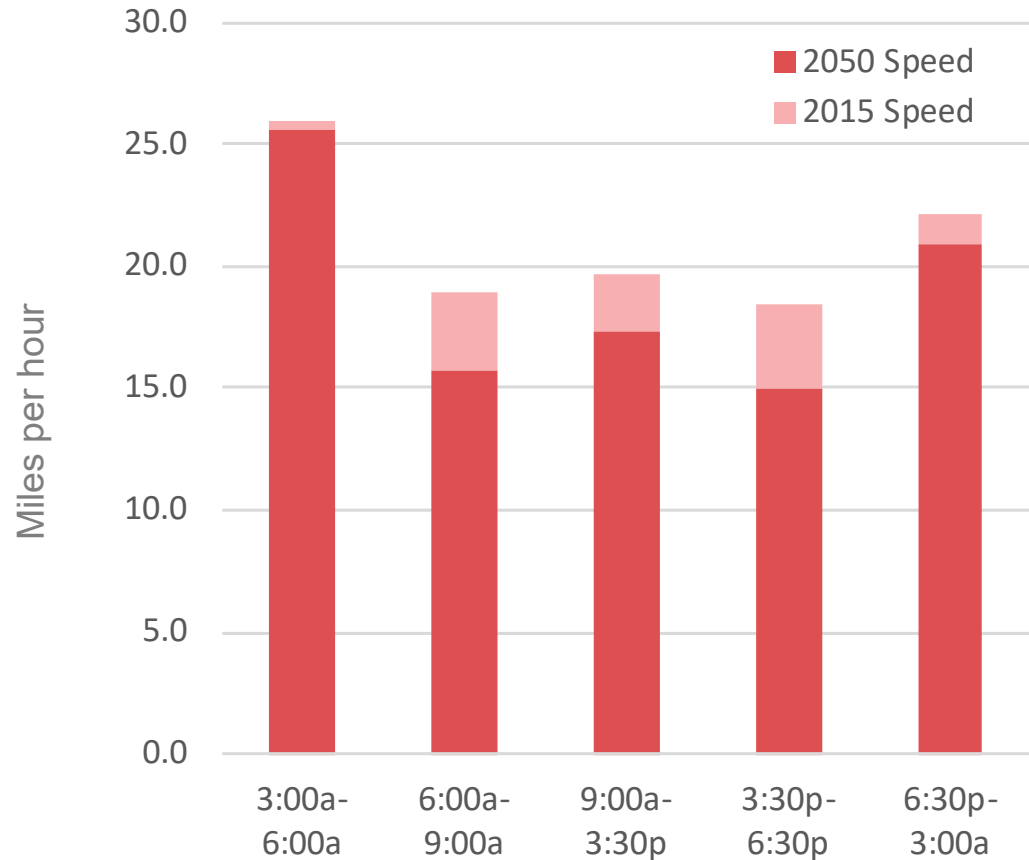


Total Driving and Emissions in San Francisco



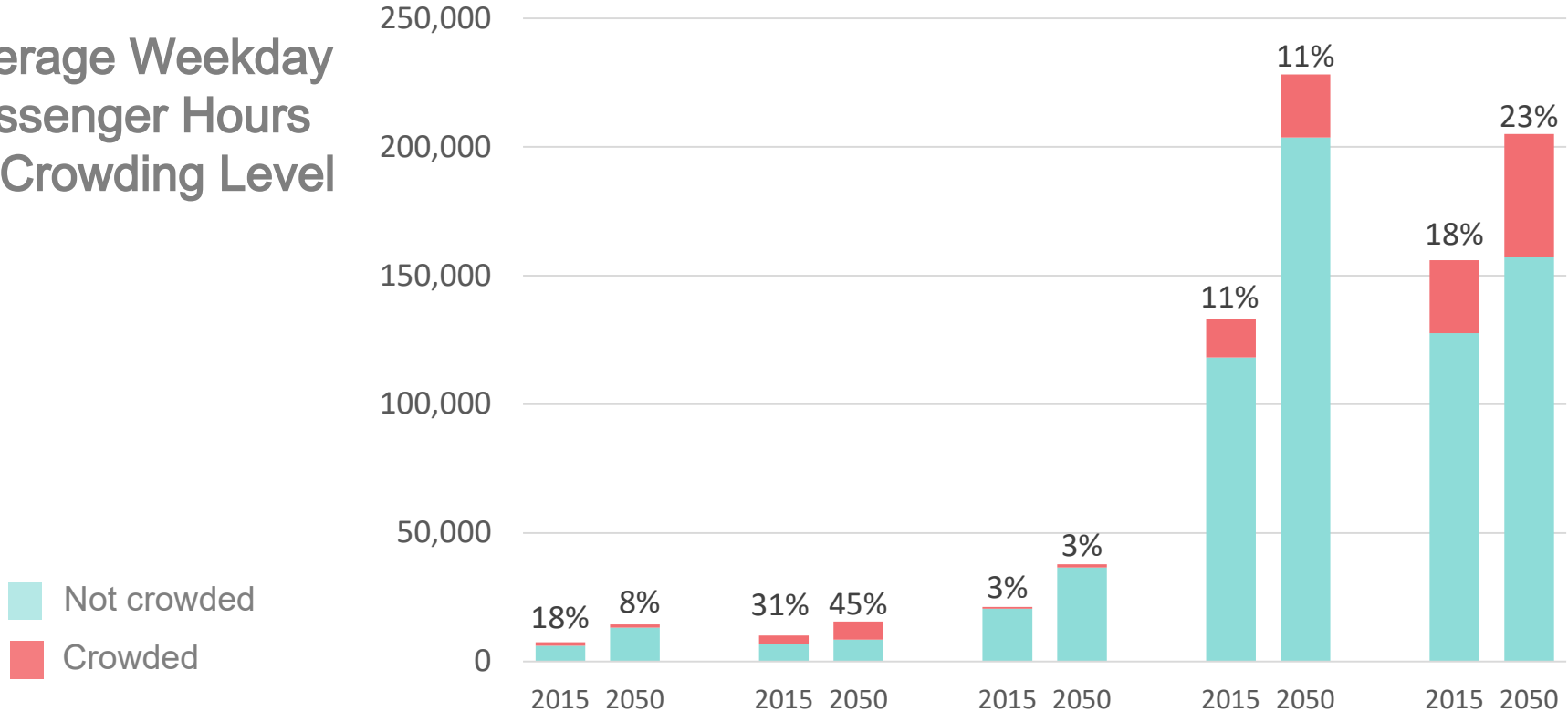
Auto Speeds Decline; Congestion Gets Worse

Change in Speeds
by Time of Day for all
roadways in San
Francisco



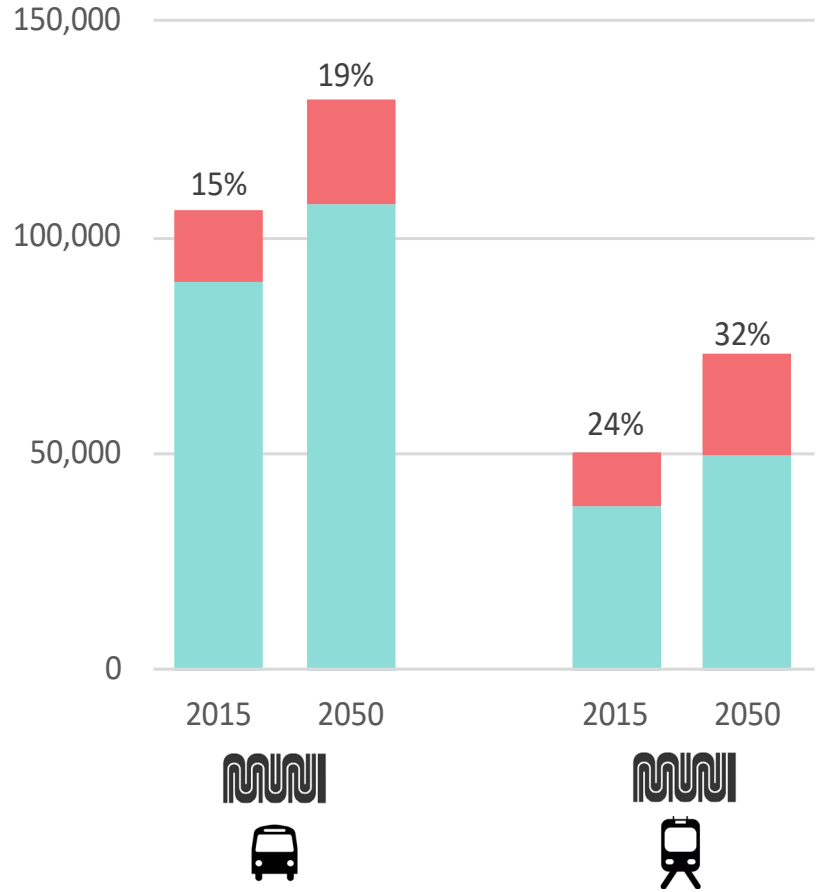
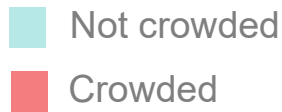
Transit is More Crowded

Average Weekday
Passenger Hours
by Crowding Level



Transit is More Crowded

Average Weekday
Passenger Hours
by Crowding Level –
Muni



Transit is More Crowded

2050 AM Passenger Crowding Level

Muni Bus



Muni Rail



Regional Transit



Key Findings

Where We Are Making Progress



ECONOMIC
VITALITY

Planned growth increases housing and jobs

SF residents have increased transportation access to jobs

ConnectSF

No Change

Average commute times stay the same citywide

Performance is uneven across different parts of the city

Key Findings

Major Challenges to Address



EQUITY



ECONOMIC
VITALITY



ENVIRONMENTAL
SUSTAINABILITY

Inequitable outcomes in CoCs

- Commute times worsen
- Access to high-quality transit drops
- Access to jobs by both auto and transit lags behind non-CoCs

Sustainable modes lose ground

- Falling short of the mode share goal
- Total miles driven increases (Climate Action Plan Goal is to decrease)

Increased congestion and transit crowding

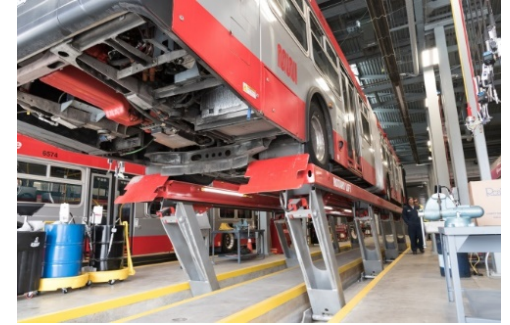
What Else is in the Statement of Needs?



Accountability and
Engagement



Safety and Livability



State of Good Repair

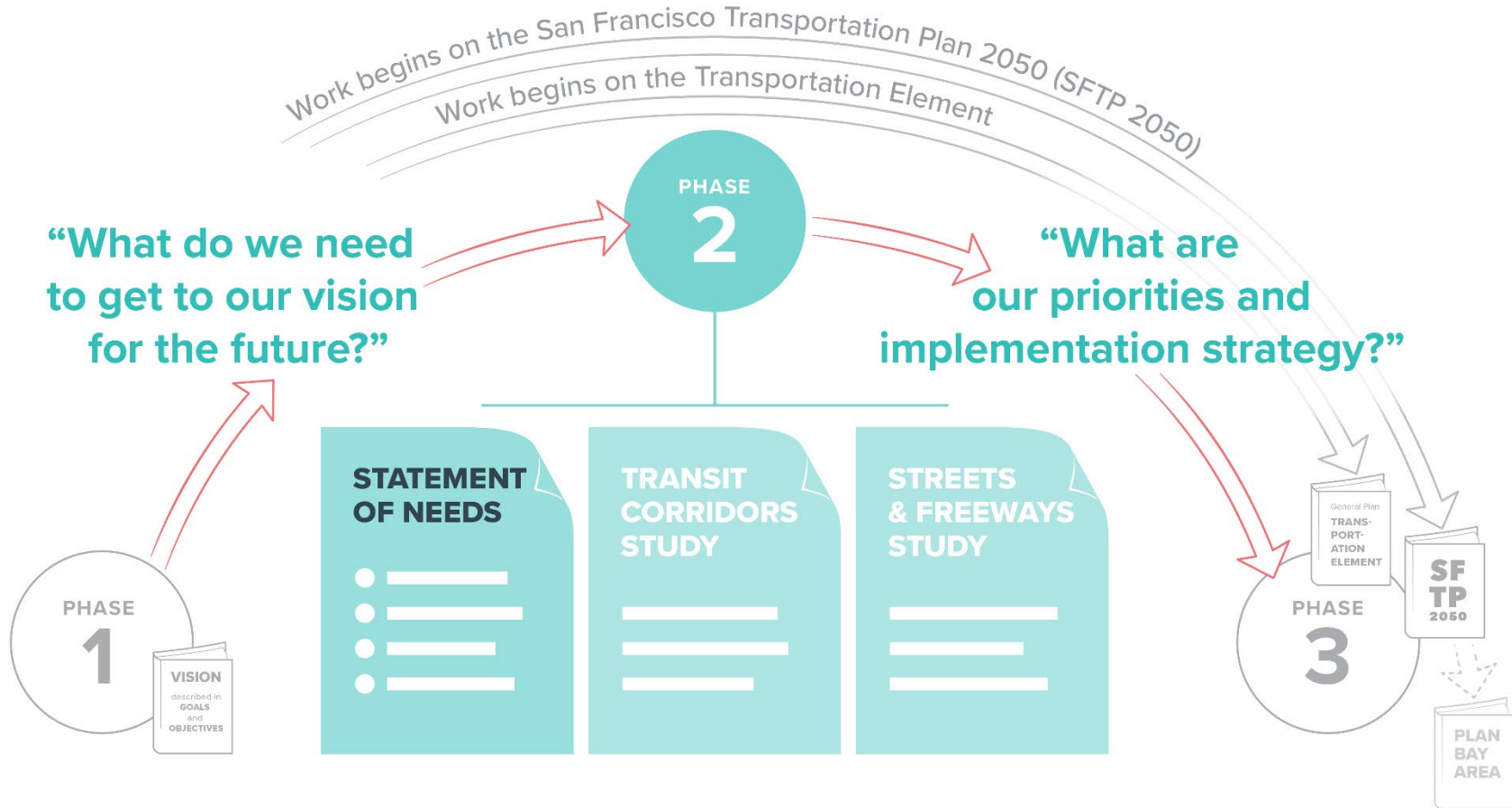


Sea-Level Rise

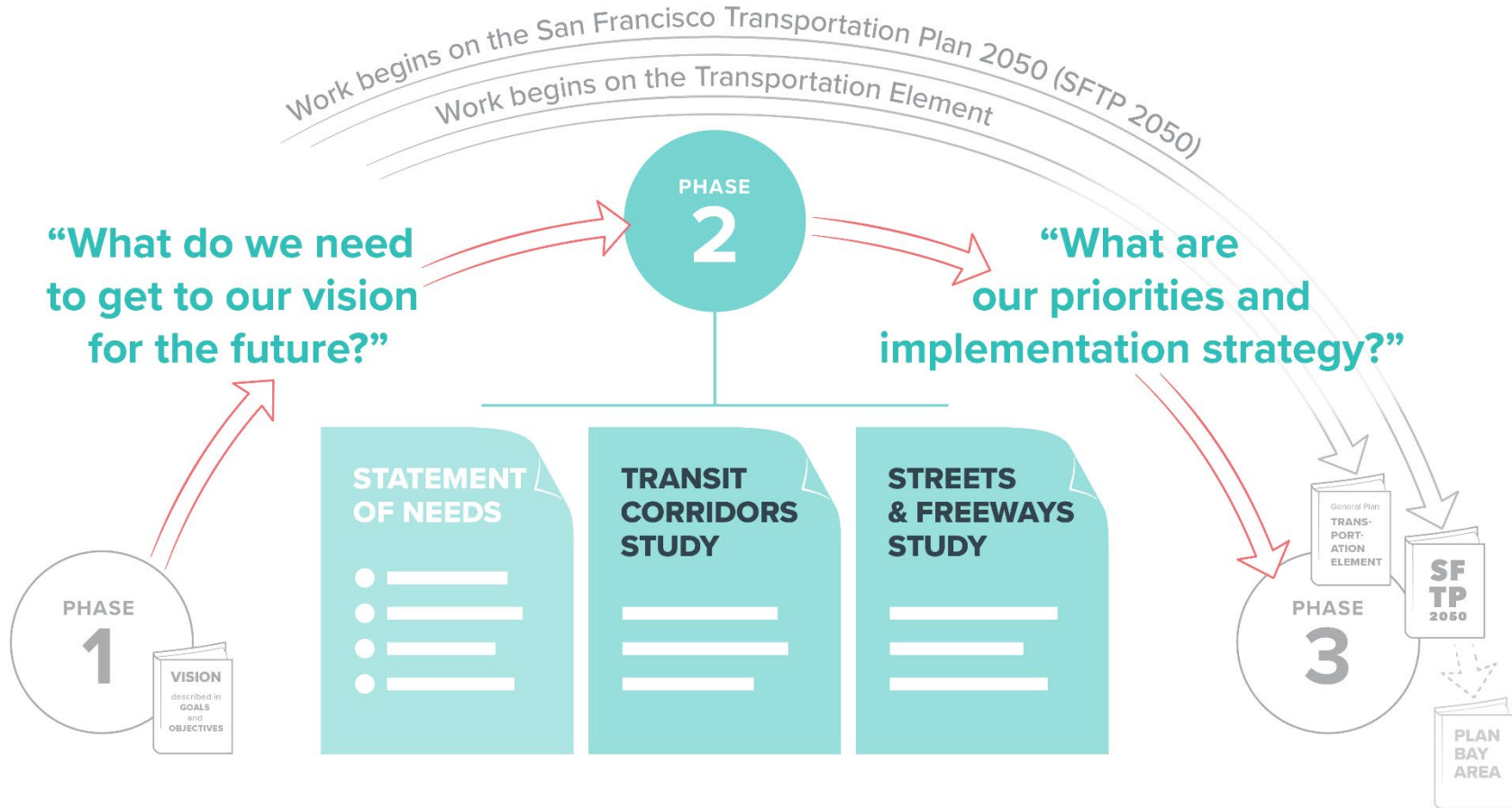


Travel Patterns

ConnectSF: Overall Process



ConnectSF: Overall Process



Regional Coordination

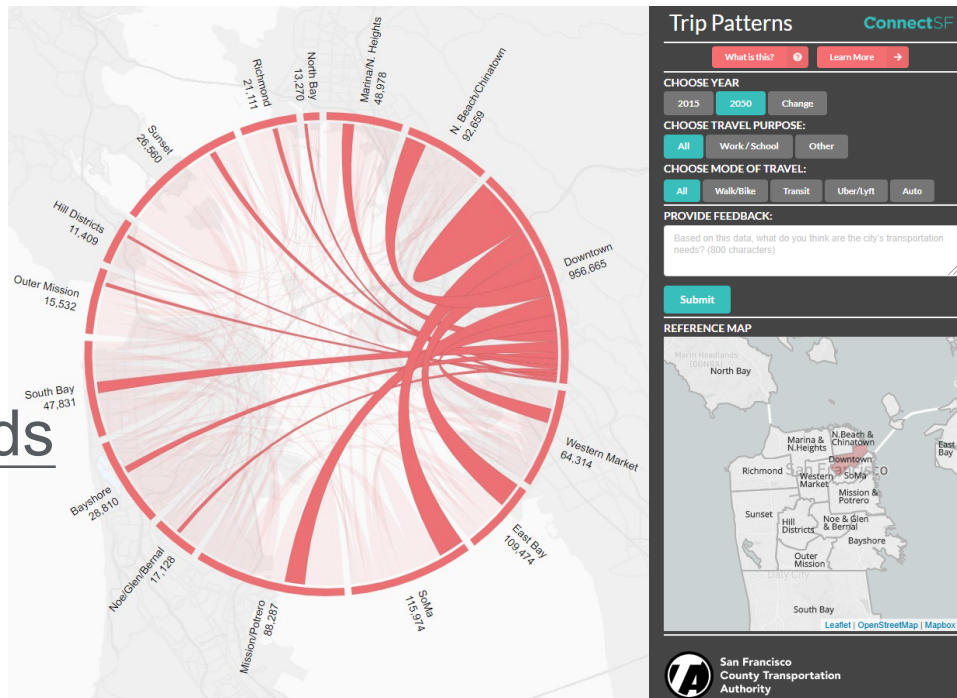
Plan Bay Area 2050 is the region's long-range transportation planning effort led by the Metropolitan Transportation Commission (MTC).

The Transportation Authority is leading San Francisco's project submissions based on the SFTP. ConnectSF's Phase 2 outreach will coordinate with the Transportation Authority's outreach for the MTC project submissions.



Opportunities for Engagement

1. Explore and provide feedback on interactive maps available at: www.connectSF.org/about/transportation-needs
2. In-person outreach in summer/fall 2019
3. Request a presentation (email connectsf@sfgov.org)





Thank you

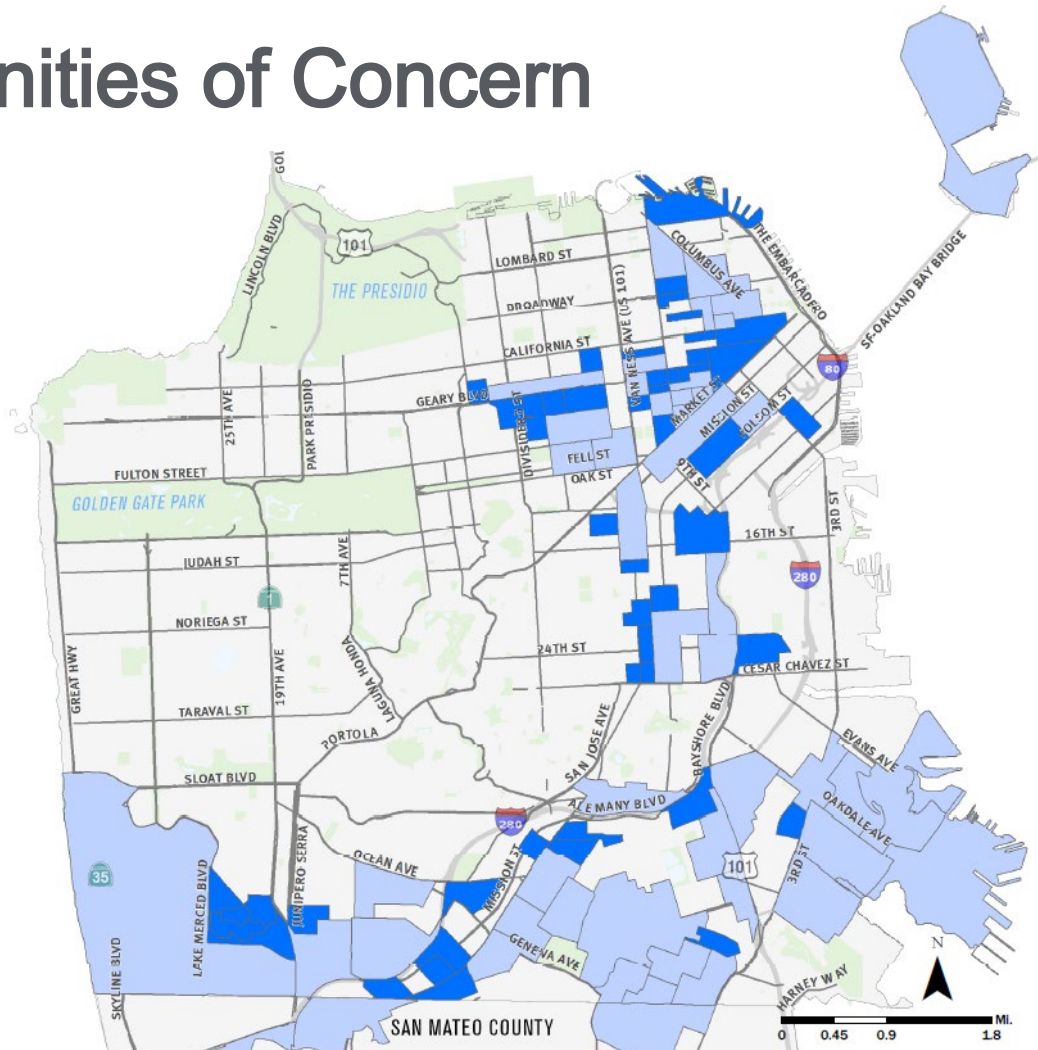
For more info:
www.connectsf.org

Camille Guiriba
camille.guiriba@sfcta.org

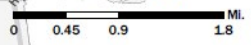
ConnectSF

Other Slides

Communities of Concern



- SFCTA 2017 supplemental Communities of Concern Boundaries
- MTC 2017 Communities of Concern (Modified)
- Parks and Open Space

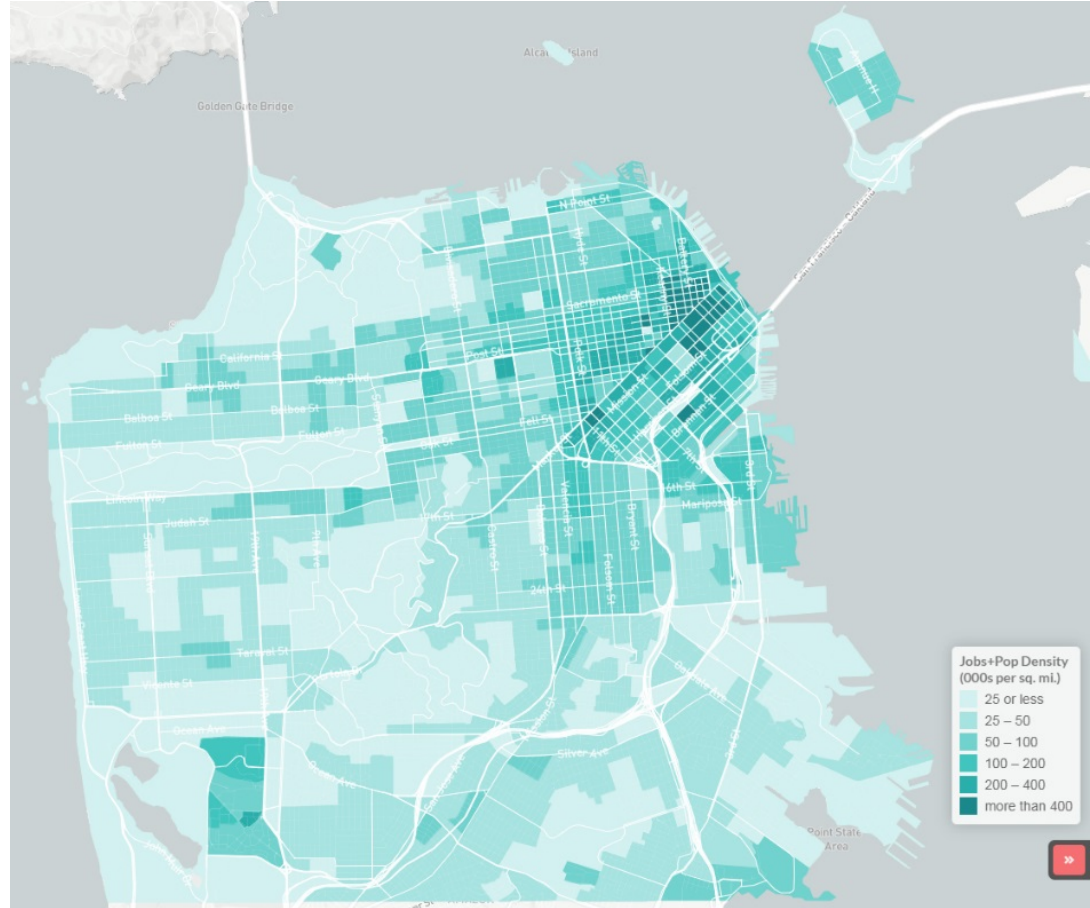


Neighborhood Districts Used in Transportation Modeling



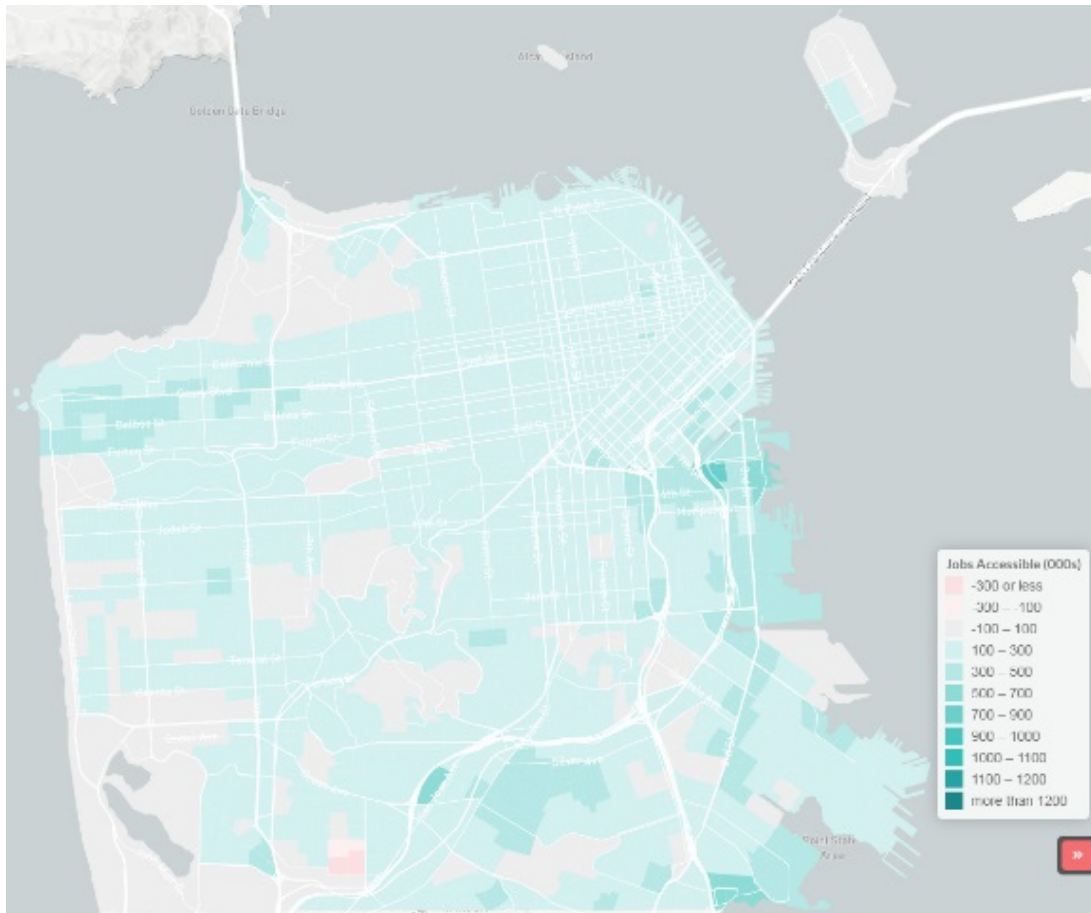
Where Are We Growing?

2050 SF Population and Employment Density



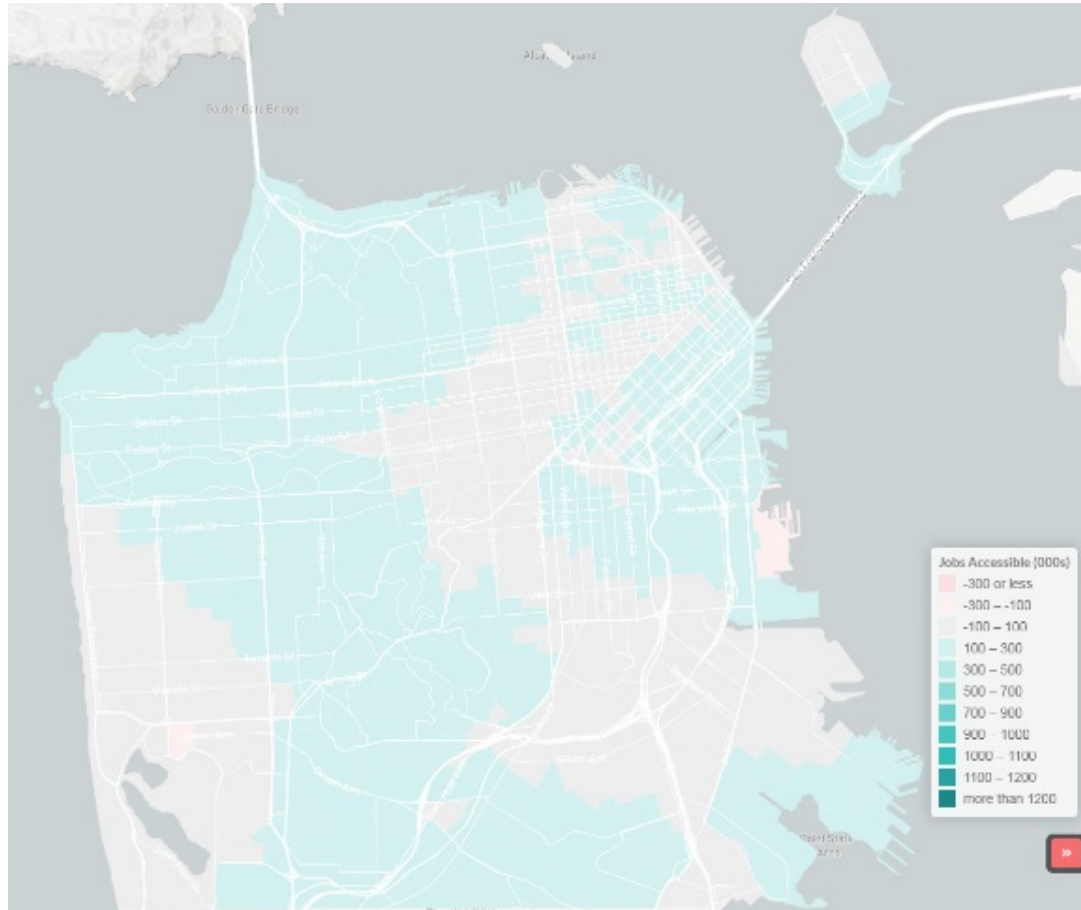
More Jobs are Accessible

2015-2050 Change in
Jobs Accessible by
Transit in 45 Minutes

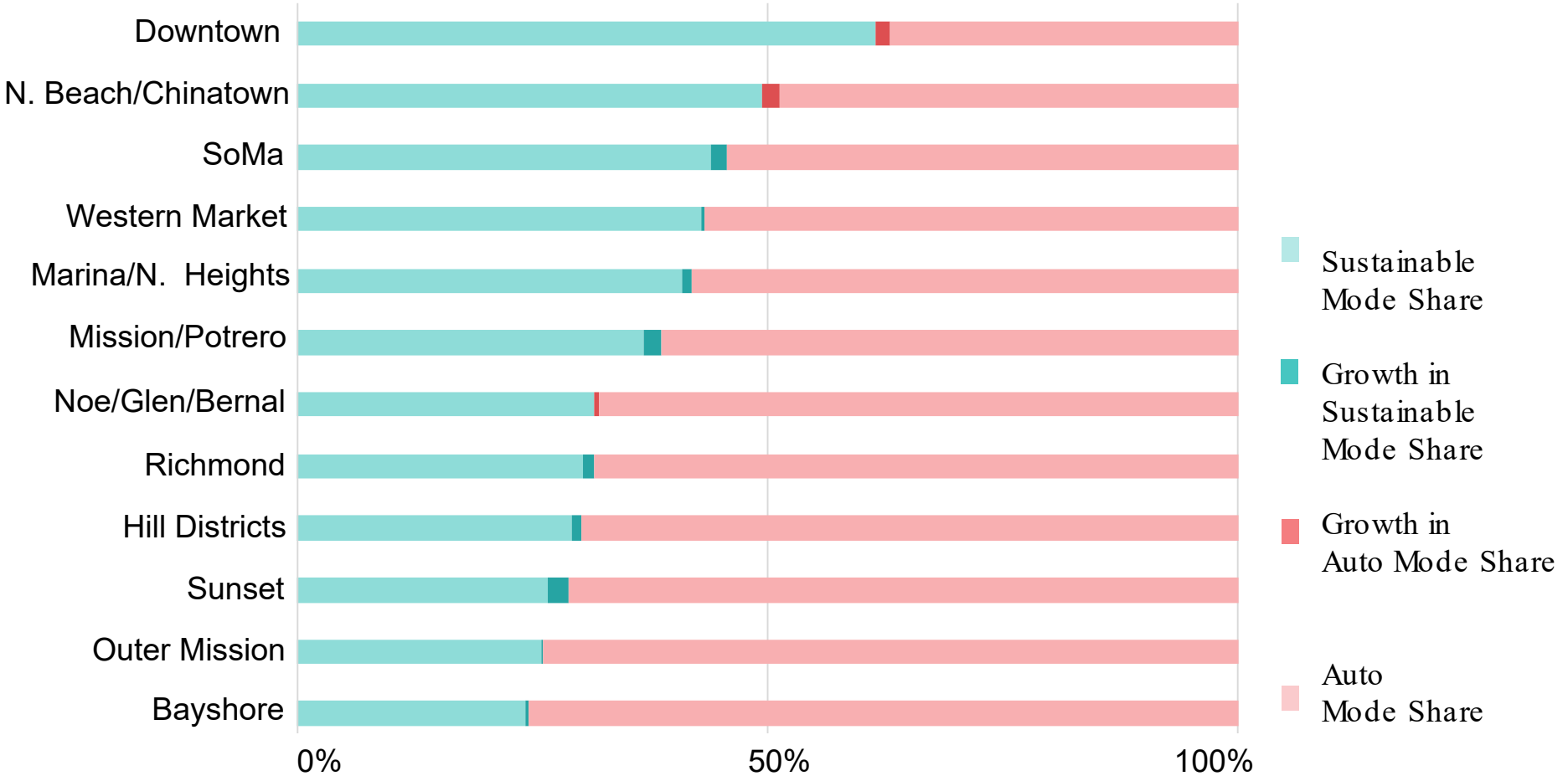


More Jobs are Accessible

2015-2050 Change in
2050 Jobs Accessible
by Auto in 30 Minutes



Auto Modes Share Remains High Outside Downtown



Auto Speeds Decline; Congestion Gets Worse

Change in AM Speeds
by Road Segment

