

## MISSION STREET / 13TH STREET / US 101 NB OFF-RAMP

### Alternative One-Way Otis Street

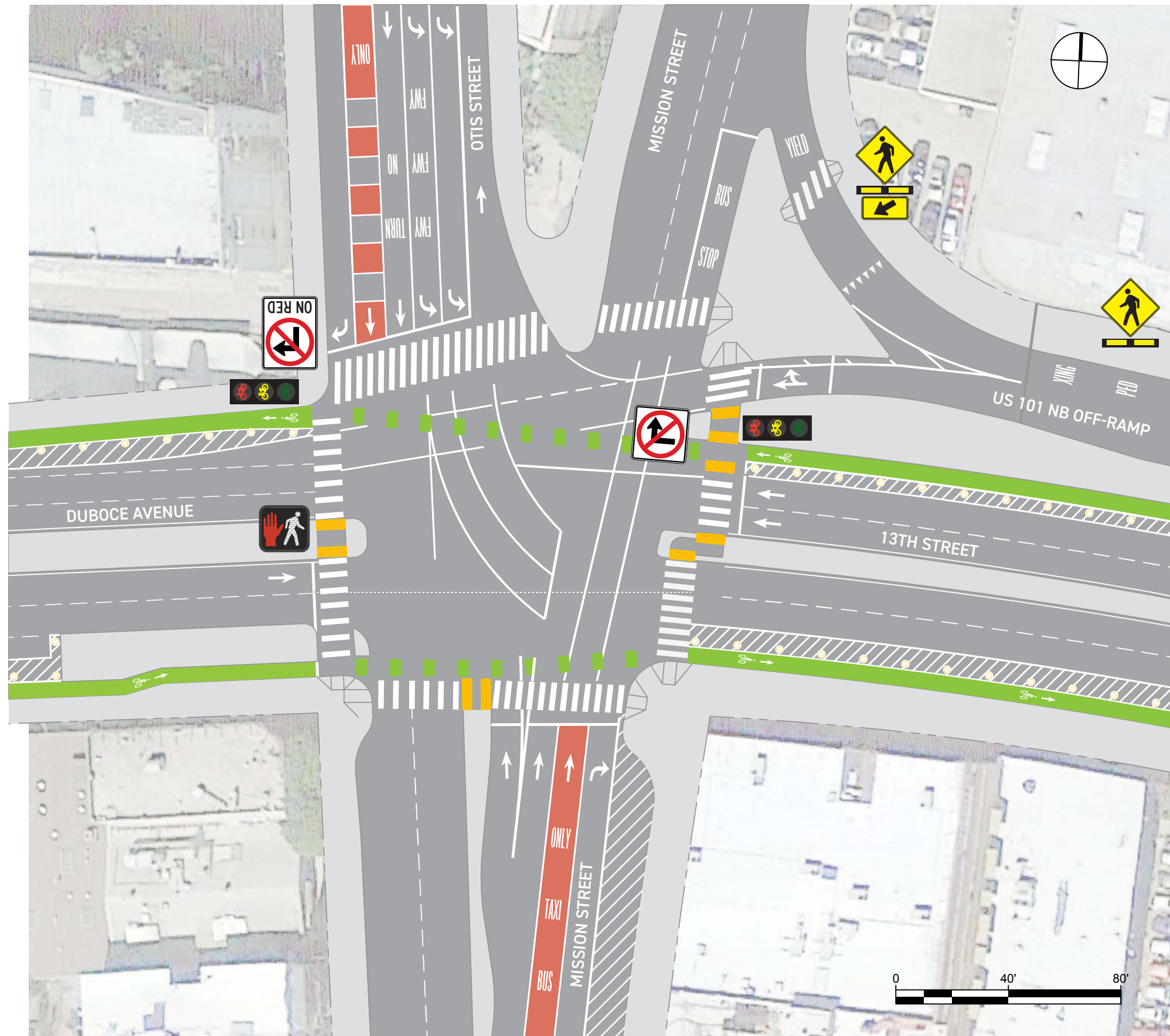
#### NOTES

##### Market Street Hub Project Improvements

- Protected cycle track on 13th and Duboce Avenue, channelize westbound bicycle lane and realign US 101 ramp to increase bicyclist visibility and reduce conflicts
- Remove U-turn from Otis St. to Mission St. to reduce number of traffic movements and conflicts

##### SoMa Freeway Ramp Intersection Safety Study Proposals

- Bulb-outs and curb ramps
- Median refuge islands for people crossing Duboce and 13th Street
- Pedestrian and traffic signal upgrades
- Brighter lighting under the bridge
- Accessible Pedestrian Signal (APS) for all crosswalks
- Crosswalk flashing beacons and signage on un-signalized off-ramp to Mission Street
- New crosswalk striping
- Bus-only lanes on Mission St. approaching the intersection
- Additional signal heads and signs for improved visibility



## MISSION STREET / 13TH STREET / US 101 NB OFF-RAMP

### Alternative Two-Way Otis Street

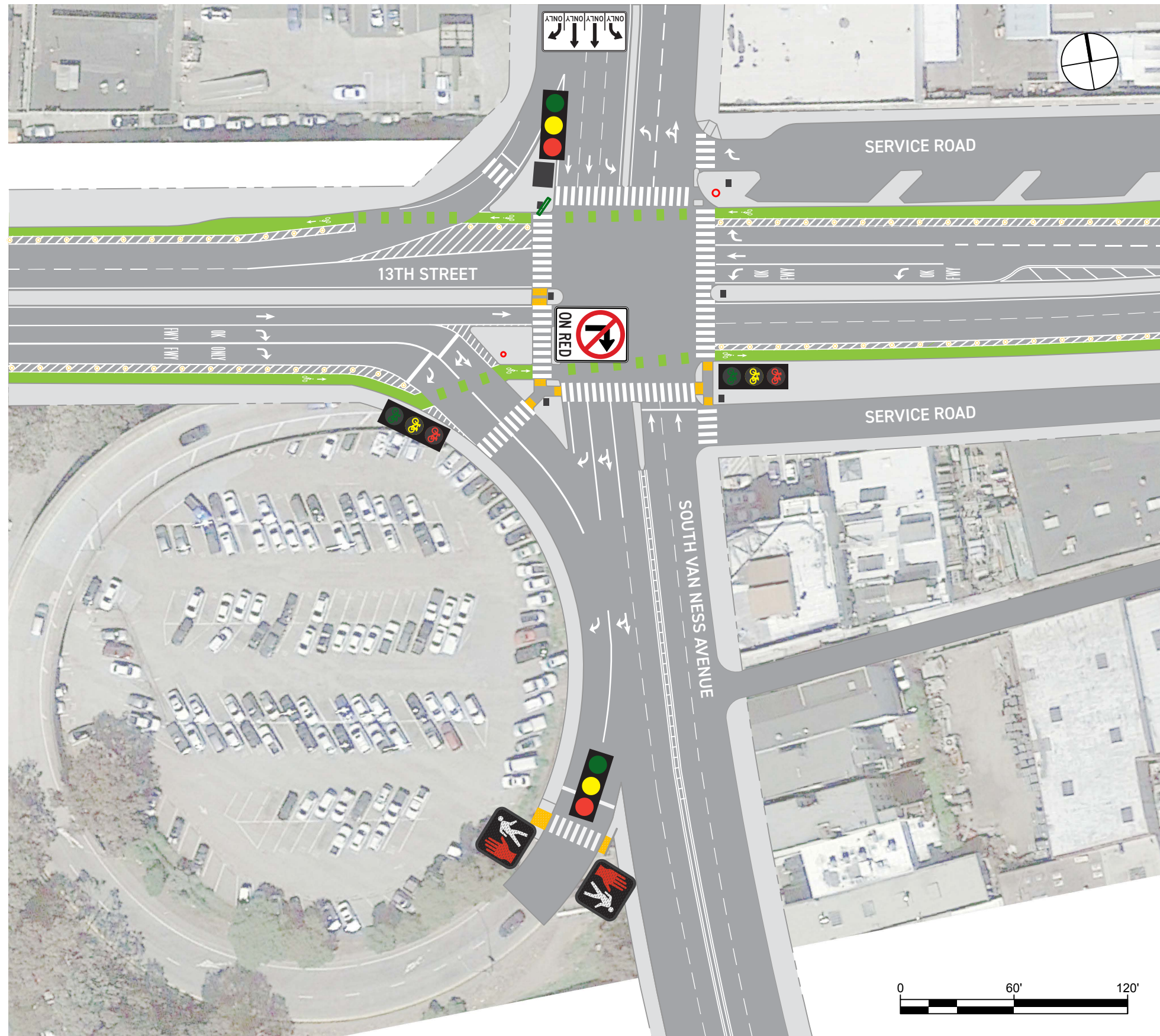
#### NOTES

##### Market Street Hub Project Improvements

- Protected cycle track on 13th and Duboce Avenue
- Two-way Otis Street. Modify Mission St. median and remove U-turn from Otis St. to Mission St. to accommodate traffic to Otis St.

##### SoMa Freeway Ramp Intersection Safety Study Proposals

- Bulb-outs and curb ramps
- Median refuge islands for people crossing Duboce and 13th Street
- Pedestrian and traffic signal upgrades
- Brighter lighting under the bridge
- Accessible Pedestrian Signal (APS) for all crosswalks
- Crosswalk flashing beacons and signage on un-signalized off-ramp to Mission Street
- New crosswalk striping
- Bus-only lanes on Mission St. approaching the intersection



# SOUTH VAN NESS AVE / 13TH ST / US 101 SB ON-RAMP

## NOTES

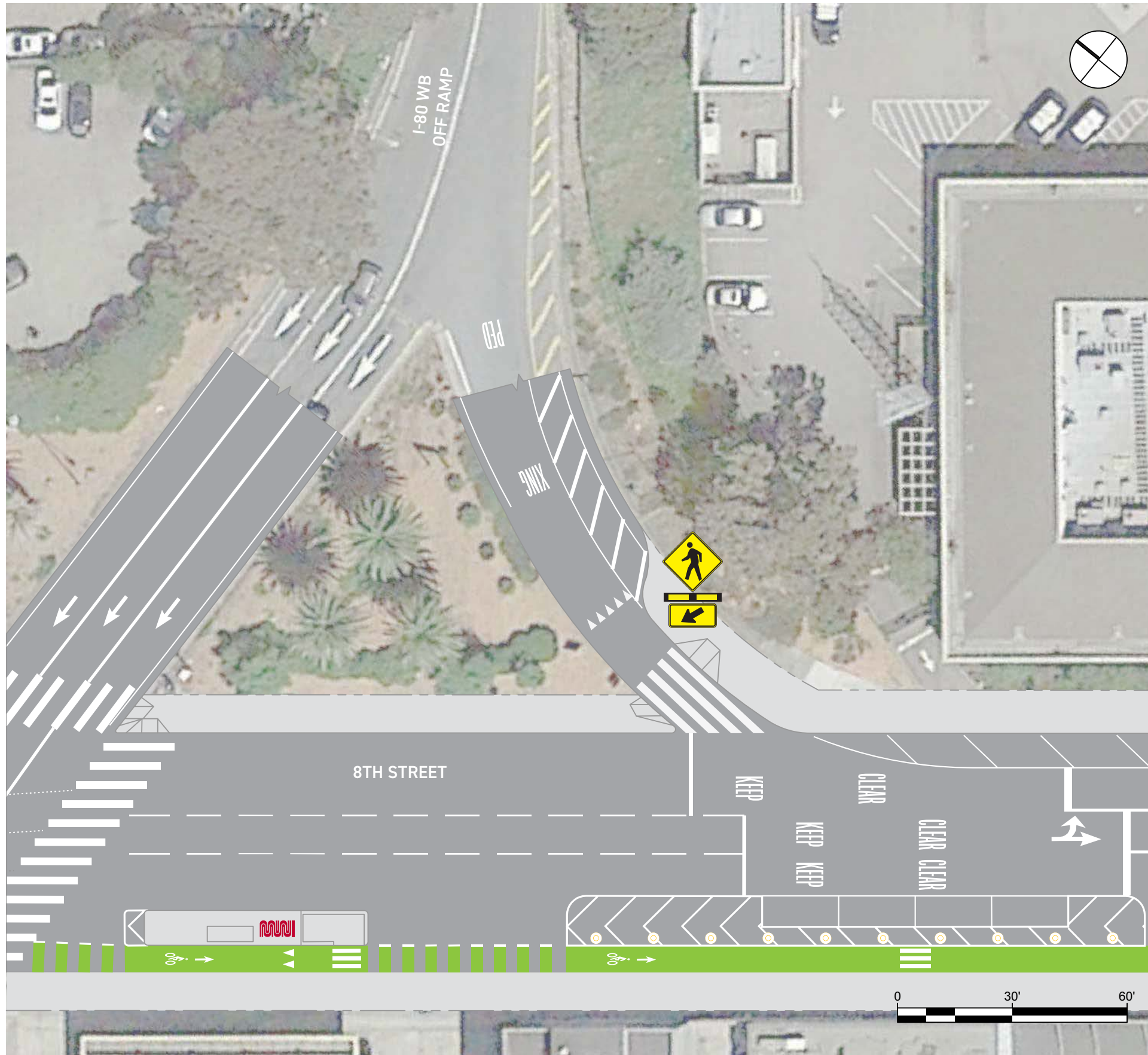
### Market Street Hub Project Improvements

- Protected cycle track on 13th Street

### SoMa Freeway Ramp Intersection Safety Study Proposals

- Bulb-outs and curb ramps
- Median refuge islands across 13th Street
- Pedestrian and traffic signal upgrades
- Brighter lighting under the bridge
- Protected left-turn from S Van Ness Ave. to 13th Street
- New sidewalk on west side of S Van Ness Ave.
- New traffic signal and pedestrian crosswalk at the US 101 freeway southbound on-ramp

# 8TH STREET (MIDBLOCK) / I-80 WB OFF-RAMP



## NOTES

### SFMTA 8th Street Safety Project Improvements

- Transit boarding island
- Protected bike lane

### SoMa Freeway Ramp Intersection Safety Study Proposals

- Bulb-outs and curb ramps
- Crosswalk flashing beacons and signage
- Crosswalk striping and yield line upgrades
- Additional streetlighting



## BRYANT STREET / 8TH STREET / I-80 EB ON-RAMP

(Capital Project)

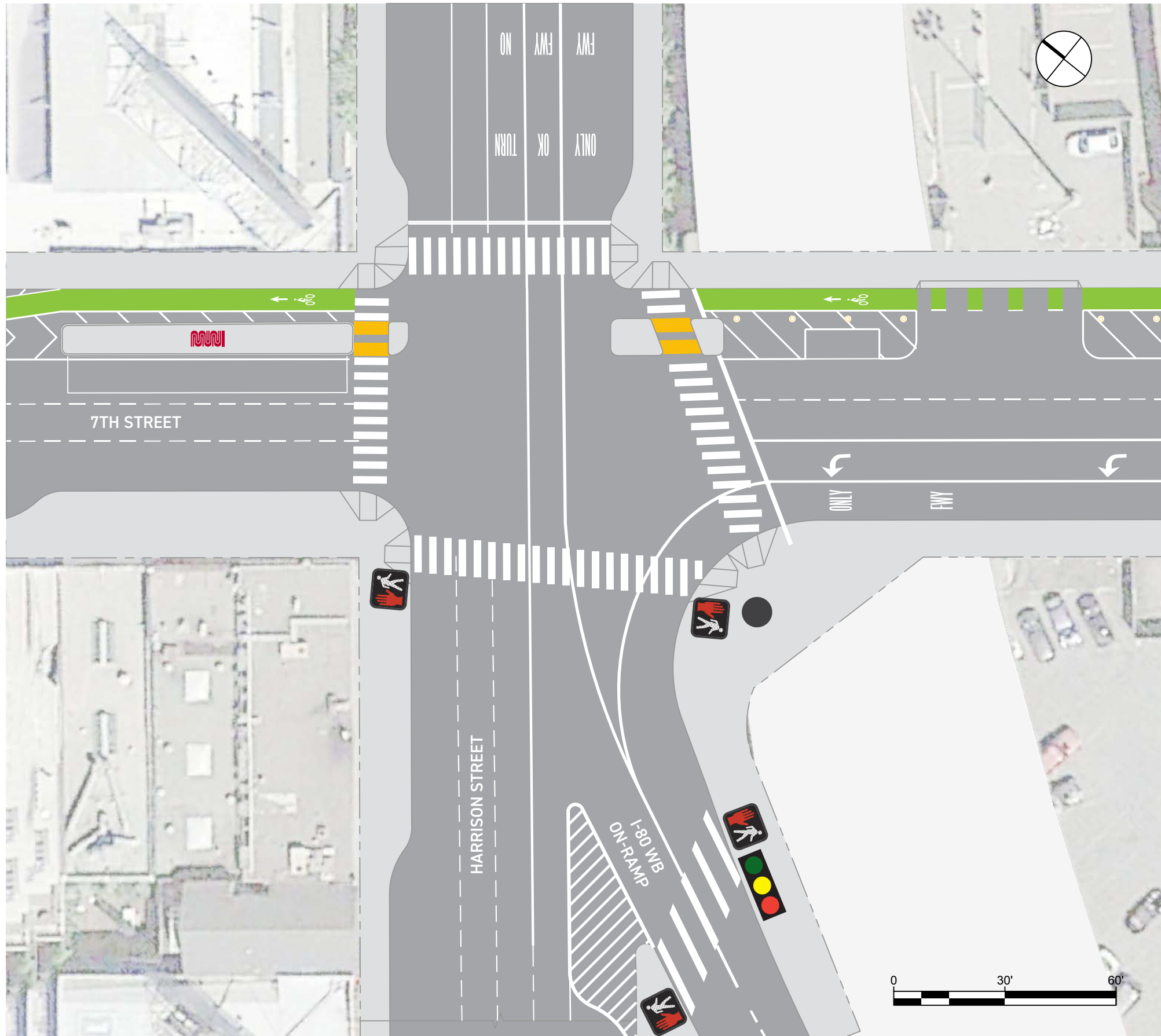
### NOTES

#### SFMTA 8th Street Safety Project Phase 2 Project Improvements

- Protected bike lane on 8th Street
- Transit boarding island

#### SoMa Freeway Ramp Intersection Safety Study Proposals

- New crosswalk across Bryant Street with protected signal phase and Leading Pedestrian Interval (LPI)
- New sidewalk along north side of Bryant St., new crosswalk across on-ramp with new traffic signal
- Bulb-outs and curb ramps
- Median refuge island modification
- Crosswalk striping upgrades
- Overhead lane assignment signs
- New traffic signal upgrades to improve visibility



# HARRISON STREET / 7TH STREET / I-80 WB ON-RAMP

(Capital Project)

## NOTES

### Caltrans I-80 On-Ramp Project Improvements

- New pedestrian signal at crosswalk across the I-80 on-ramp
- Upgraded traffic signals

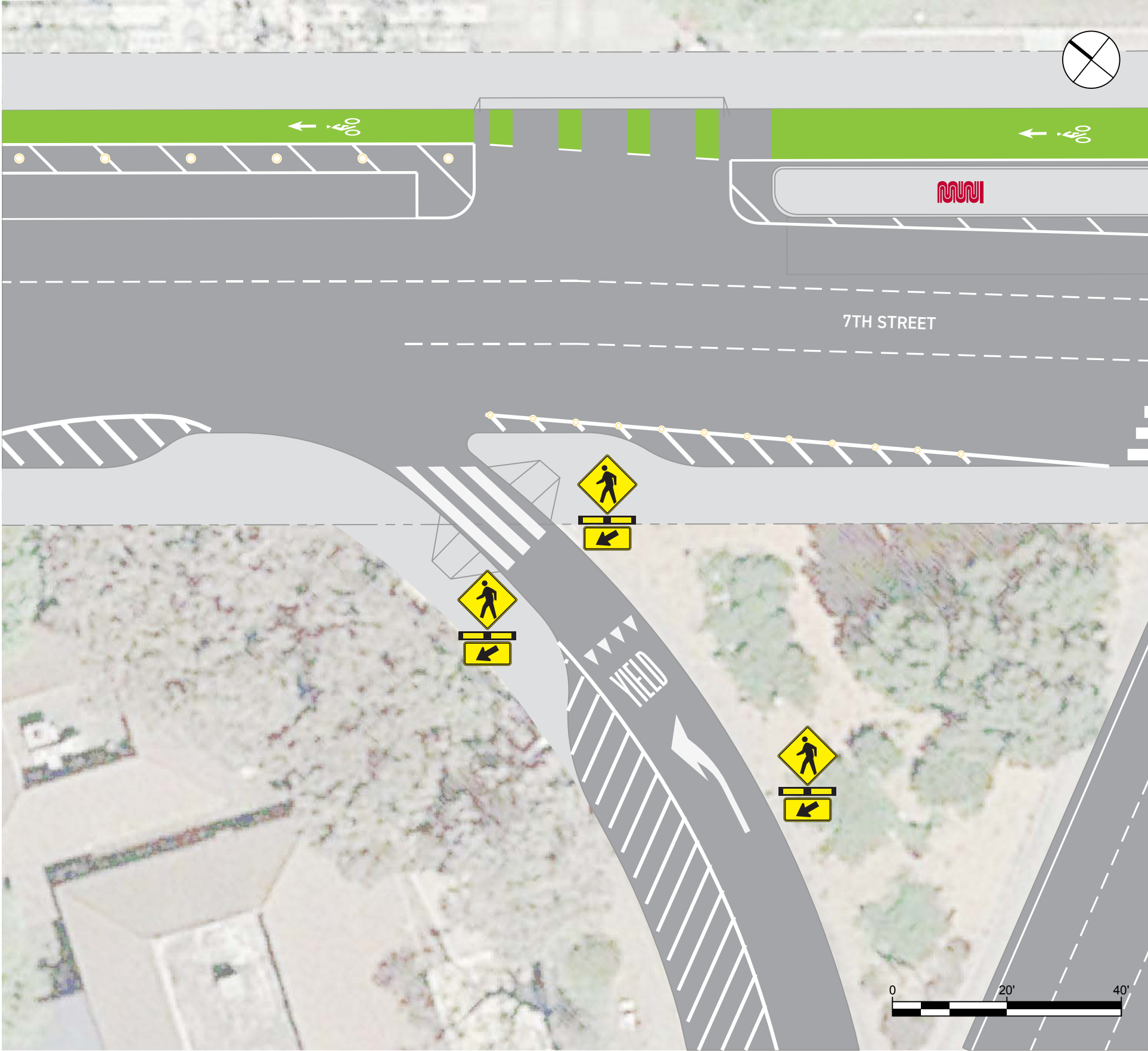
### SFMTA 7th Street Bikeway Project Improvements

- Protected bike lane on 7th Street
- Transit boarding island

### SoMa Freeway Ramp Intersection Safety Study Proposals

- New signalized pedestrian crosswalk across Harrison Street
- Median refuge islands across 7th Street
- Bulb-outs and curb ramps
- Bus bulb at south side of Harrison St. east of the intersection

# 7TH STREET (MIDBLOCK) / I-80 EB OFF-RAMP



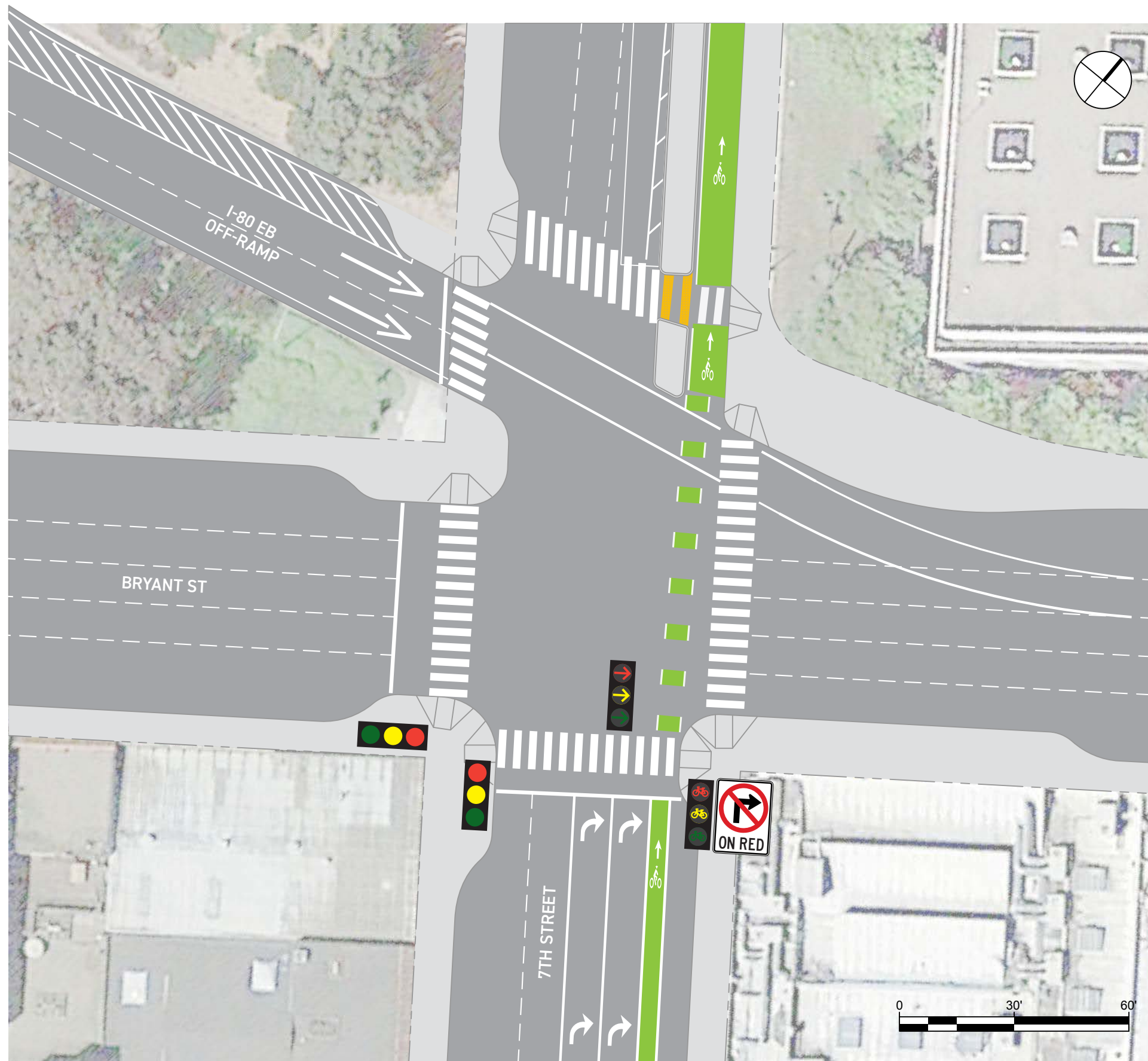
## NOTES

### SFMTA 7th Street Bike Lane Project Improvements

- Protected bike lane on 7th Street
- Transit boarding island

### SoMa Freeway Ramp Intersection Safety Study Proposals

- Lane reduction from two to one at the I-80 off-ramp approach
- Bulb-outs and curb ramps
- Crosswalk flashing beacons and signage
- Crosswalk striping and yield line upgrades
- Recommended improvement will require Caltrans approval and Muni re-route options.



## BRYANT STREET / 7TH STREET / I-80 EB OFF-RAMP

### NOTES

#### SFMTA 7th Street Bike Lane Project Improvements

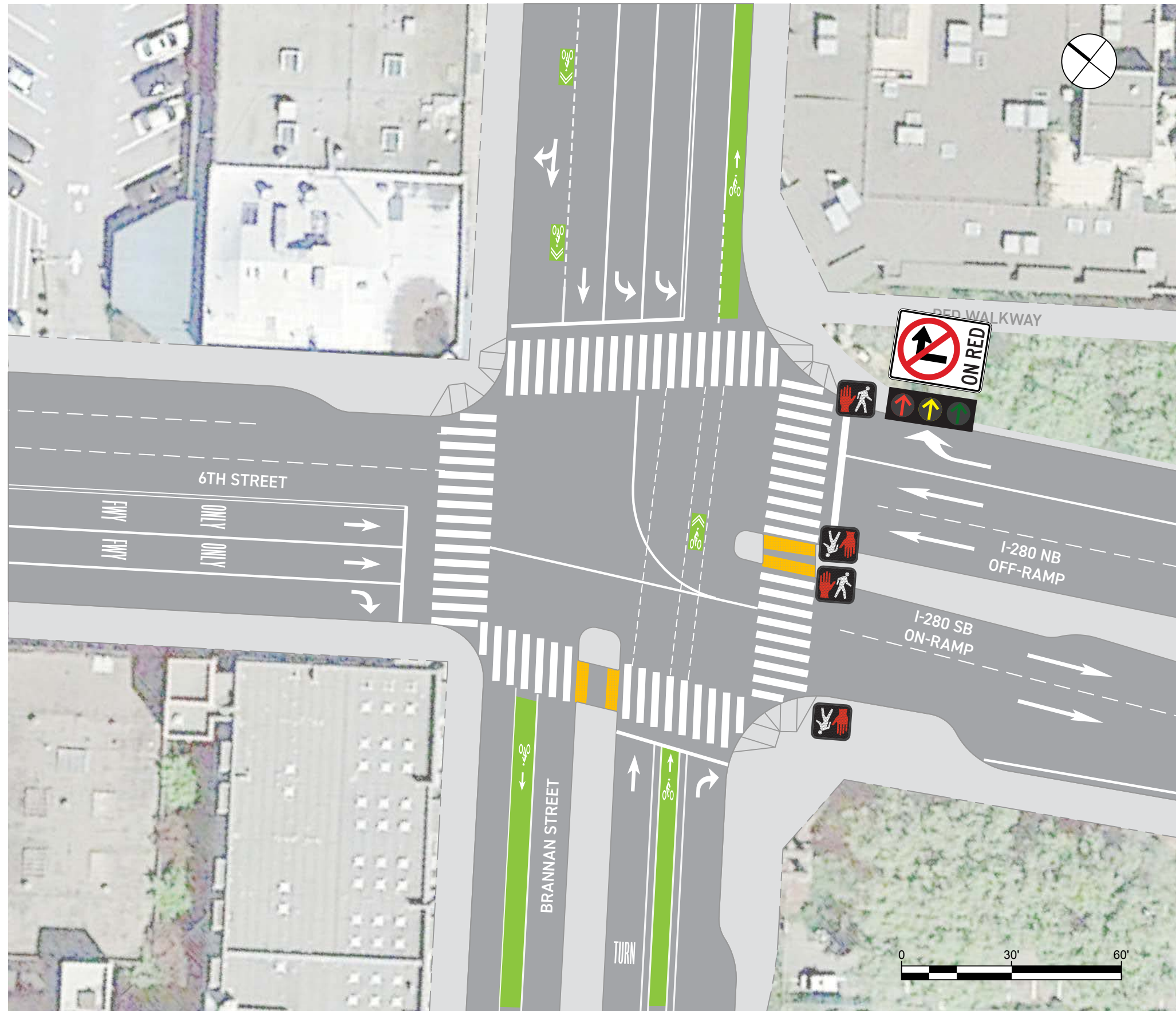
- Protected bike lane on 7th Street

#### SoMa Freeway Ramp Intersection Safety Study Proposals

- Lane reduction from three to two on the I-80 offramp approach (requires Caltrans approval)
- Bulb-outs and curb ramps
- Crosswalk striping upgrades
- Bus bulb
- Additional traffic signal upgrades
- Additional pedestrian level lighting



# BRANNAN STREET / 6TH STREET / I-280 ON/OFF-RAMP



## NOTES

### SFMTA 6th and Brannan Road Diet Project Improvements

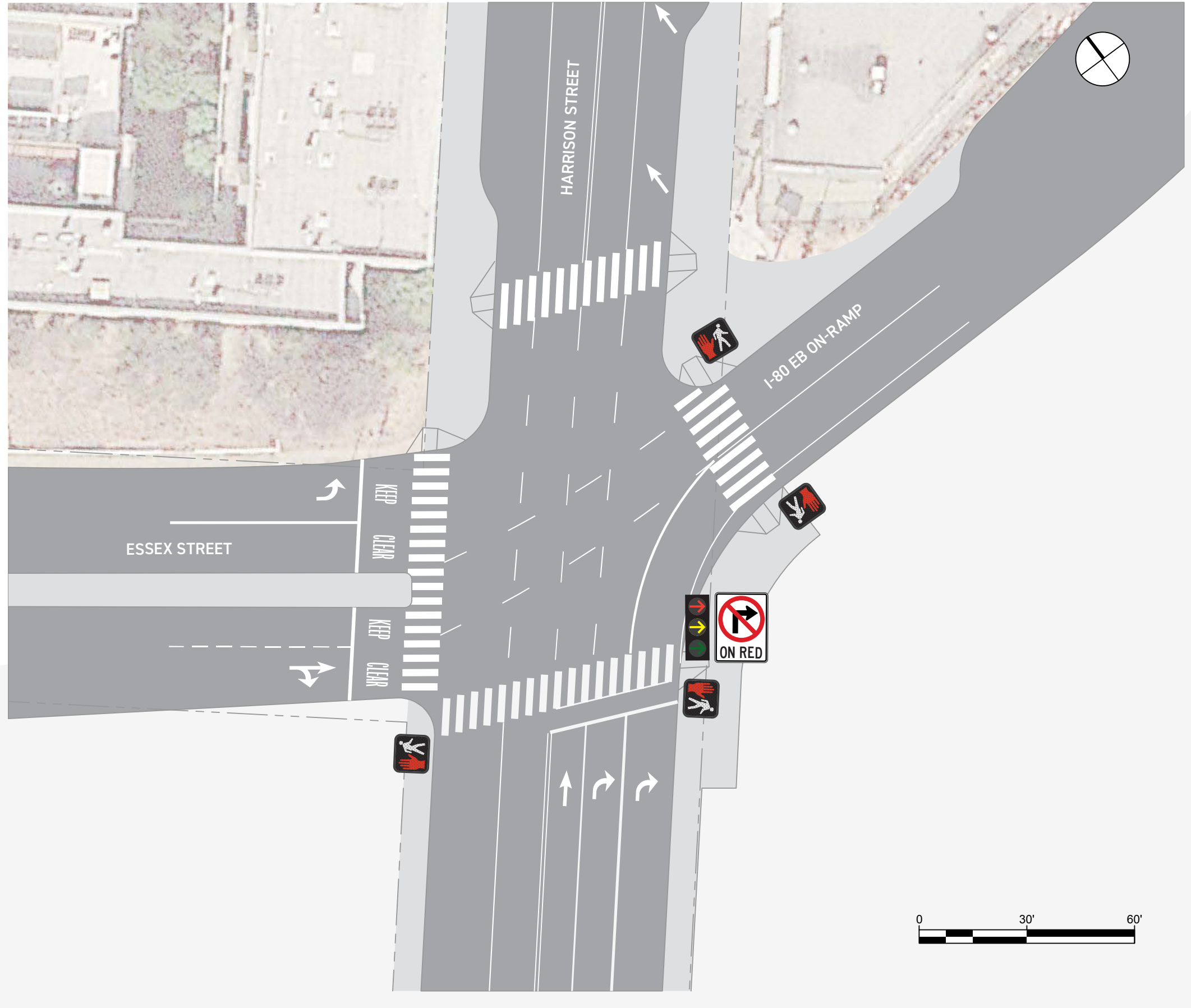
- Road diet and bike lanes on Brannan Street

### SF Flower Mart Improvements

- Potential sidewalk widening on 6th Street
- Potential bike lane or cycle track on westbound Brannan Street

### SoMa Freeway Ramp Intersection Safety Proposals

- Bulb-outs, curb ramps and median refuge islands
- New crosswalk and median refuge island across the I-280 approach
- Protected signal phase for Brannan crosswalk on east side of intersection
- Additional high-visibility crosswalks
- Traffic signal upgrades



# HARRISON STREET / ESSEX STREET / I-80 EB ON-RAMP

## NOTES

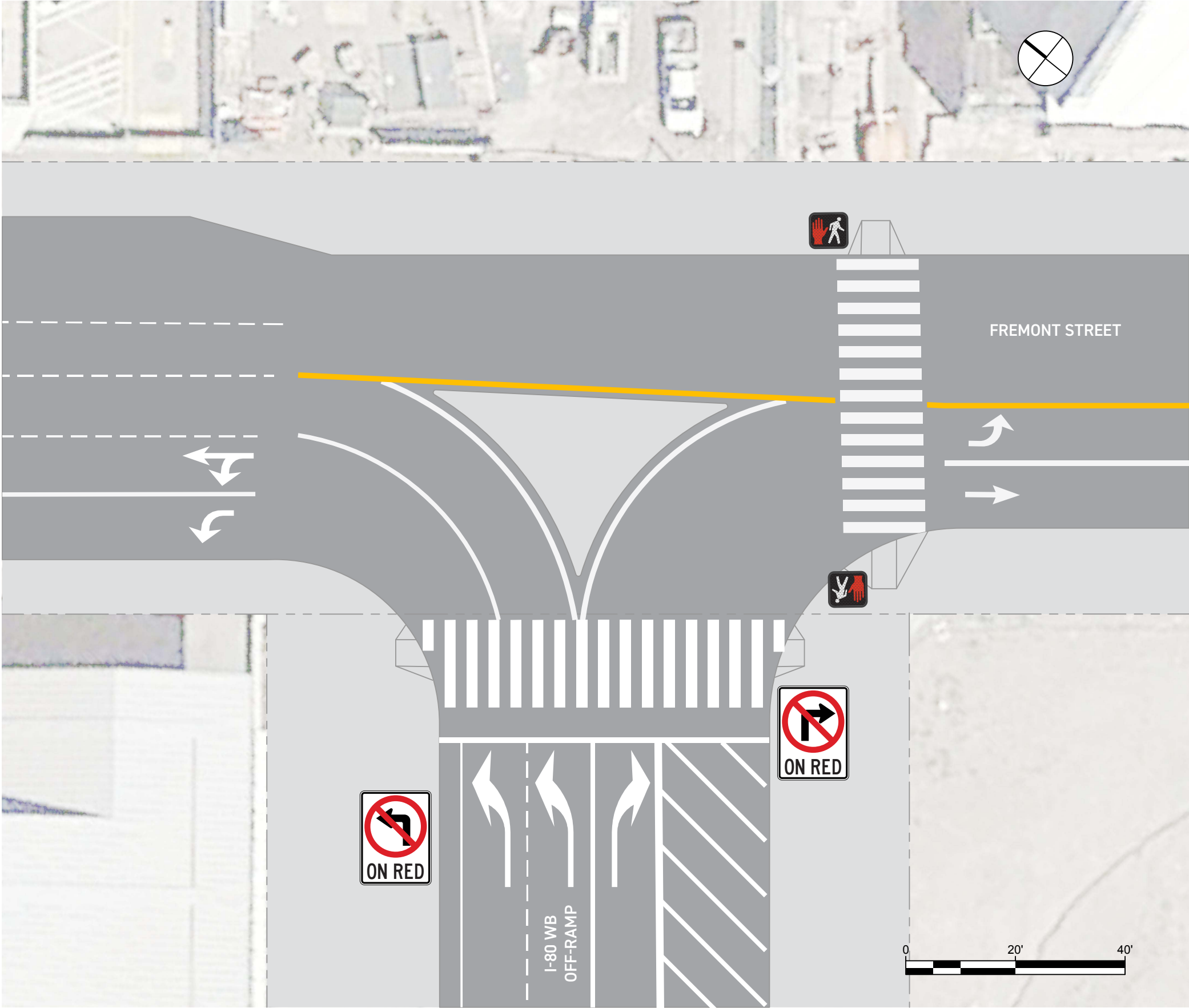
### Improvements by Others

- Bulb-outs on Harrison Street by adjacent developments

### SoMa Freeway Ramp Intersection Safety Study Proposals

- New protected crosswalks across Harrison Street and I-80 On-Ramp
- Bulb-outs and curb ramps
- New sidewalk on south side of Harrison St. west of the intersection
- Additional traffic signal upgrades

# FREMONT STREET / I-80 WB OFF-RAMP



## NOTES

### SoMa Freeway Ramp Intersection Safety Study Proposals

- New crosswalk and pedestrian signals across Fremont Street
- Crosswalk striping and curb ramp upgrades
- Raised traffic splitter island