

PROFESSIONAL SERVICES PRIME CONNECTIONS

October 21, 2021

AECOM GLOBAL + LOCAL



56,000+
Global employees



Northern California

4 offices

Oakland, San Jose,
San Francisco,
Sacramento

776+

Bay Area-based
employees



250+

Transportation discipline
and energy professionals,
and technical staff

INTEGRATED SERVICES

BUSINESS LINES



SERVICES

- Architecture
- Building Engineering
- Construction Services
- Design + Planning
- Economics
- Energy
- Environment
- Industrial
- Mining
- National Governments
- Oil, Gas & Chemicals
- Power
- Program, Cost, Consultancy
- Program Management
- Transportation
- Water

INDUSTRY LEADER



DBE/SBE SELECTION

<https://prequal.aecom.com/>

- ✓ Pre-Approved in Subport
- ✓ Appropriate qualifications in place
- ✓ Known for high quality service
- ✓ Overall selection informal

AECOM SUPPORT Log In

Email

Password

[Forgot/Change Password?](#) [Login](#)

To obtain a login, please use the [New Account](#) page.

SUPPORT

<https://prequal.aecom.com/>

AECOM SUPPORT

Home | My Ratings | My Requests | Prequalification Approvals | Search

[RATE A SUPPLIER](#) | [REQUEST TO ADD A NEW SUPPLIER](#)

Suppliers: Click to view supplier profile. **Quick Filter:** ✓ ✕

Supplier Name	Score	Supplier Status	Prequalification Status
	N/A	Pending approval	Not Submitted
	N/A	Conditionally Approved	Approved
	4	Conditionally Approved	Approved
	N/A	Conditionally Approved	Approved
	N/A	Pending approval	Not Submitted
	N/A	Pending approval	Not Submitted
	N/A	Pending approval	Additional Information Requested
	4.2	Conditionally Approved	Approved
	N/A	Pending approval	Not Submitted
	N/A	Conditionally Approved	Approved
	N/A	Pending Re-Approval	Renewal Not Started
	N/A	Pending approval	Additional Information Requested
	N/A	Pending Re-Approval	Renewal Not Started
	N/A	Pending approval	Not Submitted
	N/A	Pending approval	Not Submitted
	N/A	Pending approval	Not Submitted
	N/A	Pending approval	Not Started
	N/A	Pending approval	Not Submitted
	N/A	Pending approval	Not Started
	N/A	Pending approval	Additional Information Requested

Page 1 of 577 (11538 items)

Explanation of rating system: Suppliers are rated with a score from 1(lowest) to 5(highest). A score of N/A means they have not been rated yet.

User Links

- User Settings
- Rate a Supplier
- New Supplier Request
- Supplier Search
- Rating Search
- Help
- Feedback

DBE/SBE COMMUNICATION

<https://prequal.aecom.com/>



Meet-and-Greets to discuss partnering opportunities



Long-term relationships formed through building a track record of successful project execution together



Regular communications are helpful – we want to hear about recent work, new hires, etc from subs!



Appreciate being **alerted to future opportunities** (from subs)

IDEAL PARTNERS

<https://prequal.aecom.com/>

- Prior work with client (though not mandatory)
- Relationships with client
- Communication of services provided and staffing available (brochures or other material are helpful)
- Evidence of relevant certifications/expertise to perform (technical disciplines)
- Responsiveness to proposal needs
- Willingness to brainstorm new strategies/approaches to perform work

DBE/SBE OPPORTUNITIES

VTA BART Extension Phase II
Construction Management
Open House next week!!

BART General Engineering (GEC)
2022

San Jose Airport Terminal B
Expansion 2022

Alameda County Transportation
Commission I-880 interchange
improvement

Professional engineering services
Construction management
Inspections
Document control
Survey
Geotech
Drainage
Systems
Structures
Outreach
Sustainability

DBE/SBE OPPORTUNITIES

VTA BART Extension Phase II Construction Management

<https://www.eventbrite.com/e/aecom-s-business-diversity-outreach-for-vta-bsvii-cm-tickets-178936663377>

Join us for AECOM's Business Diversity Outreach Event for VTA BSVII CM

About this event

We are seeking local subconsultants to join our AECOM team for the VTA BART Extension Phase II Construction Management project.

If your company is registered with VTA's Business Diversity Programs, which include the Disadvantaged Business Enterprise (DBE) program for federally-funded projects, the Small Business

Date and time

Tue, October 26, 2021
4:00 PM – 6:00 PM PDT
[Add to calendar](#)

Location

San Pedro Square Market
87 North San Pedro Street
San Jose, CA 95110

CONTACTS

Laynee Jones, PE

AVP, Transit/Rail

Laynee.jones@aecom.com

Ramesh Sathiamurthy

Surface Transportation

Ramesh.Sathiamurthy@aecom.com

Lindsey Sousa, AICP, LEED AP

AVP, US West Region Transit/

Rail Growth & Strategy Lead

lindsey.sousa@aecom.com

Mike Gasparro

San Jose Airport

Jon.porterfield@aecom.com

Jon Porterfield

Construction Management

Jon.porterfield@aecom.com

Abhijeet Bhoi

ACTC I-880

Abhijeet.bhoi@aecom.com



ATLAS

COMPANY OVERVIEW

we're built to be better

SAFETY IS OUR PRIORITY



A **Think 12** safety mantra means always be aware of what's:

- 12 feet in **front** of you,
- 12 feet **behind** you,
- 12 feet to **each side**,
- 12 feet **above** you...and in some cases,
- 12 feet **below** you.



Think Safe | Work Safe | Live Safe

CONNECTING THROUGH OUR VALUES



We apply our values and expertise to improve sustainable infrastructure and ensure a safe environment.

THE ATLAS STORY



ATCX

NASDAQ

3,500

staff
nationwide

150+

offices



states

\$500

million
in revenue

We strive to be the most sought-after infrastructure and environmental solutions brand, known for our unique values-driven approach and brought to life by the industry's most exceptional people.

Atlas was founded in 2017 to create a national infrastructure services platform with strong regional brands. Formed by the initial merger of three infrastructure brands, Atlas has grown to more than 3,500 professional staff providing testing, inspection and certification, environmental, engineering and design, and program, construction, and quality management services. We deliver solutions to both public and private sector clients in the transportation, commercial, water, government, education, and industrial markets.

ENR

Top Construction
Management Firm **#15**

Top Environmental
Management Firm **#9**

Top Program
Management Firm **#47**

A NATIONAL FOOTPRINT TO SERVE OUR CLIENTS



We're local everywhere with a national reach of 150+ offices throughout 43 states.

We live where we work, so every project benefits from our commitment to our communities, a deep understanding of local regulations and practices, and a wealth of relationships. We connect the best experts to create solutions and experiences with limitless potential and possibilities.

LOCAL CALIFORNIA PRESENCE



Completed & Ongoing Design-Build Projects





TESTING, INSPECTION,
& CERTIFICATION



ENVIRONMENTAL
SOLUTIONS



ENGINEERING
& DESIGN



PROGRAM/CONSTRUCTION/
QUALITY MANAGEMENT

- COMMERCIAL
- EDUCATION
- GOVERNMENT
- HEALTHCARE
- INDUSTRIAL
- TRANSPORTATION
- WATER
- POWER

TESTING, INSPECTION, & CERTIFICATION



- CONSTRUCTION MATERIALS TESTING (CMT) & SPECIAL INSPECTION
 - Reinforced Concrete
 - Soils & Aggregates
 - Asphalt
 - Concrete Anchorage
 - Masonry
 - Structural Steel
 - Fireproofing / Spray-applied FRM
 - Firestopping
 - Waterproofing/Roofing
 - Building Envelope
 - Fire/Life Safety
- QUALITY CONTROL TESTING
- OWNER VERIFICATION & INSPECTION (OVTI)

- NON-DESTRUCTIVE TESTING (NDT)
 - Ultrasonic, Magnetic Particle, Dye Penetrant
- FORENSIC & STRUCTURAL INVESTIGATIONS
 - Building Structural Components, Failure Analysis
 - Expert Witness
- MATERIALS LABORATORY SERVICES CMT
 - Laboratory
 - Metallurgical Laboratory
 - Factory QC Services
 - Product Evaluations
 - Petrographic Evaluation



- ENVIRONMENTAL SERVICES

- Environmental Site Assessment (ESA) Phase I/ Property Condition Assessments (PCA) / Due Diligence
- ESA Phase II – Subsurface Investigation and Evaluation
- Remedial Investigations / Feasibility Studies (RI/FS)
- Remediation System Design, Installation, Implementation & Optimization/Decommissioning
- Landfill Monitoring/Permitting
- Natural & Cultural Resource Surveys
- Water Quality
- Wetlands and Stream Buffer Consulting
 - 404 Permitting
- Above Ground Storage Tank (AST) & Underground Storage Tank (UST) Compliance & Management
- Environmental, Health & Safety Training
- Water Resource Management
- Risk Management Plans
- Noise Studies



ENVIRONMENTAL SOLUTIONS



- AIR QUALITY CONSULTING
 - Regulation Compliance Support
 - Air Dispersion Modeling
 - Onsite Services
 - Emissions Reporting
 - Emission Offsets & Banking
 - M&A Support



- AIR QUALITY FIELD SERVICES
 - LDAR Program Management
 - Sampling & Inspection
 - Leak Detection
 - OGI Surveys
 - Data Management



- INDUSTRIAL HYGIENE & BUILDING SCIENCES SERVICES

- COVID & Infection Control Services
- AHERA Inspections / Re-Inspections
- Indoor Air Quality Investigations & Engineering Solutions
- Radon Sampling & Reporting
- Microbial Investigations, Remediation Work Plans
- Water Intrusion Investigations
- Chemical Hygiene / OSHA Compliance
- LEED Consulting
- Ventilation Assessments & Engineering
- Occupational Exposure, Noise Exposure & Ergonomic Assessments
- Drinking Water Investigations
- Lead-Based Paint Consulting & Management
- Disaster Response
- Building Decommissioning & Closure



- ENVIRONMENTAL PERMITTING & COMPLIANCE AUDITING

- NEPA Compliance/Documentation
- NPDES Permit & Stormwater Pollution Prevention Plans (SWPPPs)
- Hazardous Waste / Hazardous Materials Permitting
- Toxic Substances Control Act (TSCA) Compliance Assistance
- History and Archaeology
- NSR Permitting
- POTW Discharge Permitting



- CIVIL SITE ENGINEERING
 - Site Engineering
 - Hydraulic Studies Bridges, Roadways, and Site Developments
 - Stormwater BMP Design
 - NPDES Design
 - SWPP
- TRANSPORTATION ENGINEERING
 - Roadway Design
 - Traffic Engineering
 - Pavement Design
- STRUCTURAL ENGINEERING
 - Foundations and Walls
 - Bridge Design
 - Dam Engineering
 - Minor Buildings
- GEOTECHNICAL ENGINEERING
- GEOPHYSICS
- HYDROGEOLOGY
- WATER / WASTEWATER
- SOLID WASTE / LANDFILL
- LAND ACQUISITION SERVICES
 - Management
 - Cost Estimates
 - Appraisal
 - Cost to Cure Engineering
 - Right-of-Way Acquisition
 - Utility Easement Acquisition
 - Closings
- SUBSURFACE UTILITY ENGINEERING (SUE)
 - Geophysics
 - Site Characterization

PROGRAM/CONSTRUCTION/ QUALITY MANAGEMENT



- PROGRAM MANAGEMENT

- Programmatic Planning & Phasing
- Contract Document Preparation
- Bid Evaluation & Award Analysis
- Alternatives / Value Engineering
- Project Estimating & Scheduling
- Project Cost / Schedule Control
- Contract Administration
- Project Management
- Community Relations / Affairs
- Asset Management

- QUALITY MANAGEMENT

- Construction Quality Acceptance Firm (CQAF)
- Design Quality Assurance (DQA)
- Construction Quality Assurance (CQA)
- Construction Engineering & Inspection (CEI)

- CONSTRUCTION MANAGEMENT

- Construction Phase Support Services Permit Prep & Review
 - Construction Observation & Monitoring
 - Document Review & Control
 - Progress Documentation & Payment Review
 - Change Order Administration
 - As-Built Record Drawings
 - Claims Avoidance, Review & Mitigation
 - Dispute Resolution
- Construction Safety Analysis & Safety Program Development

ATLAS

www.oneatlas.com

Meet the Primes



Virtual | 10.21.21

About Ghirardelli



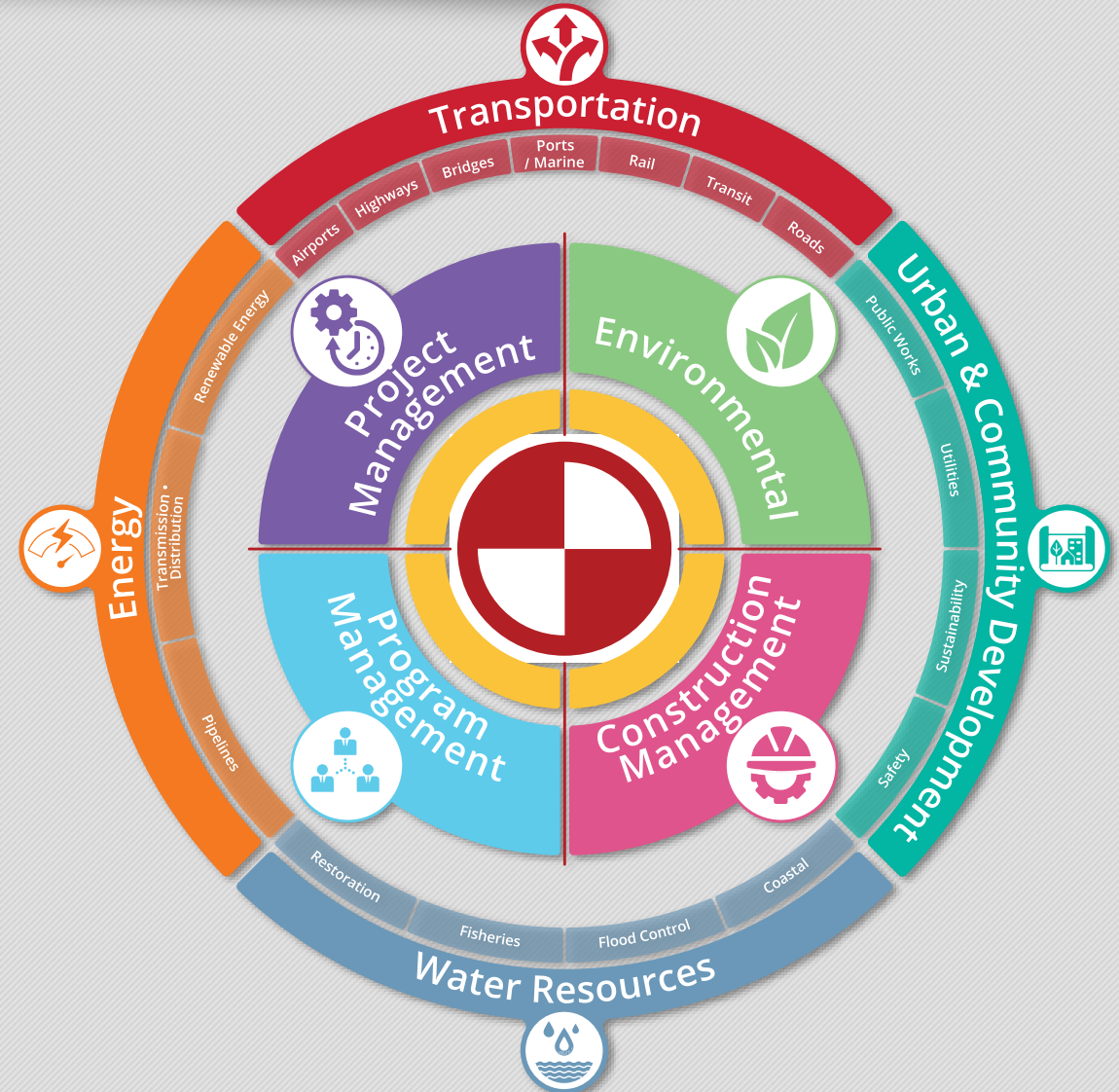
- Full Service CM Firm
- Founded in 1999
- Graduated from S/DBE Status (so we get it!)
- 150 Associates
- Awarded Great Place to Work Status
- 97% Staff Retention Rate



About Ghirardelli



- Four Sectors
- Four Business Lines
- Two NAICS Codes:
 - 541 Prof and scientific technical services
 - 5416: Management Scientific and Technical Consulting services



Construction Management & Inspection



Project Management



Schedule Management



Budget Cost Control



Construction Inspection



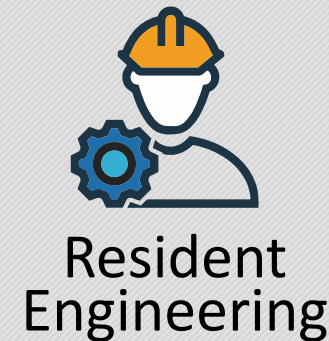
Project Closeout



Claims Avoidance / Resolution



Office Engineering



Resident Engineering

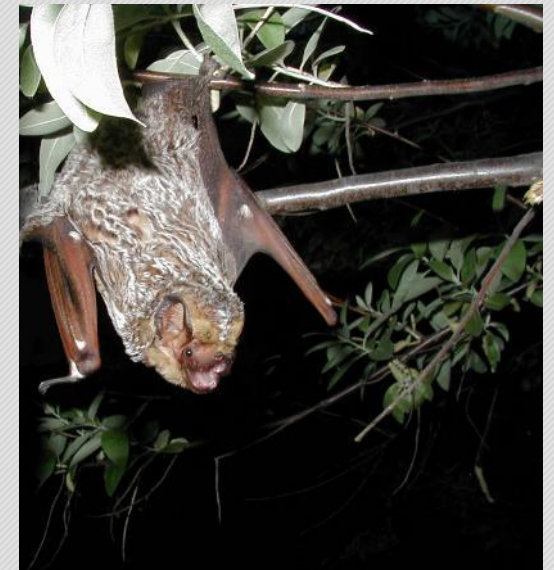


SWPPP Monitoring

Core Environmental Services



- Planning – Land use/socio-economic studies, siting and linear facilities, mitigation plans
- Permitting – All aspects including wetlands, endangered species, archaeology, water and air
- Monitoring – CEQA MMRP, biology, water quality, archaeology, reporting
- CEQA/NEPA Documents and Compliance
- GIS/Drone/Mapping – For all projects, companywide



Ghirardelli CM Team Core Capabilities

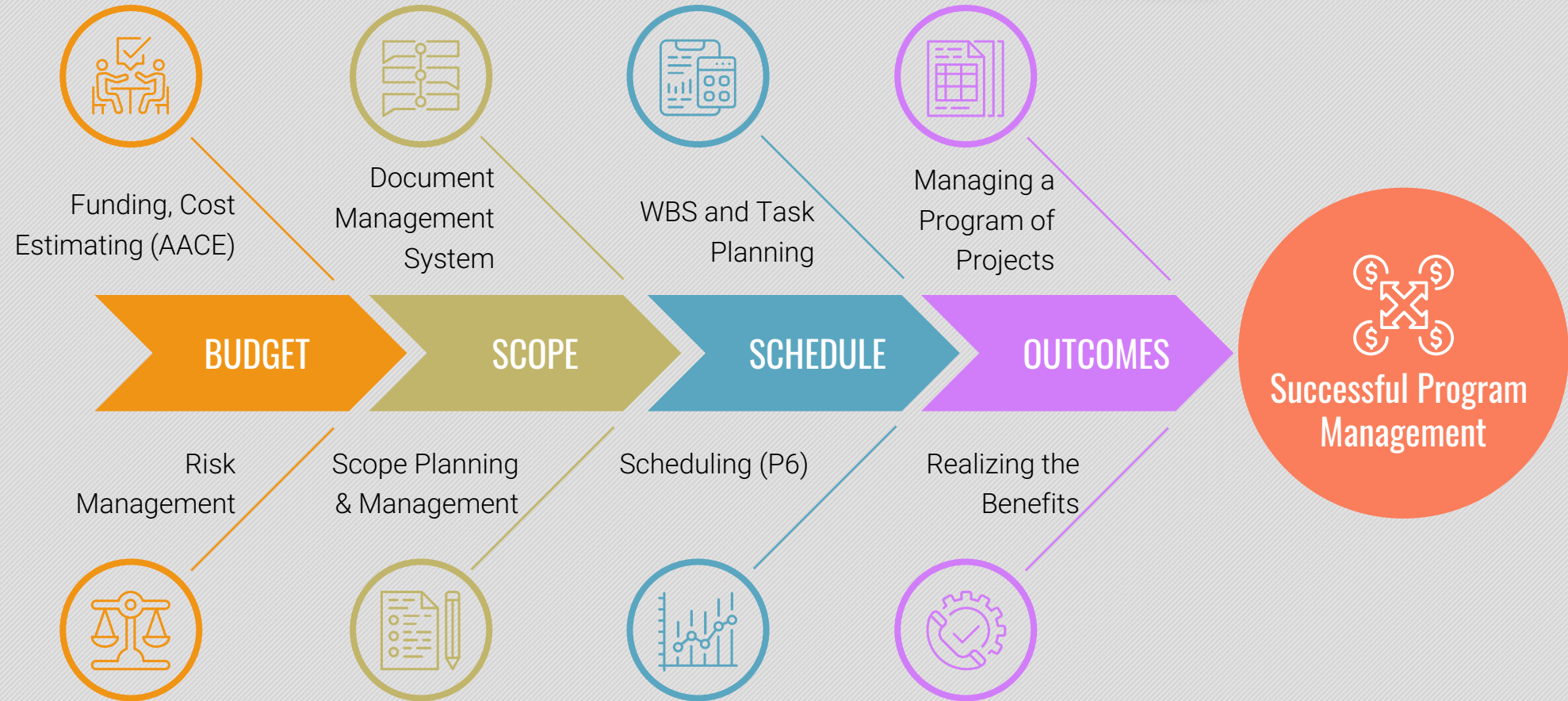


Design Engineers, Resident Engineers, Construction Managers, Field Engineers, Office Engineers

Ops Liaison, Systems Integration, Configuration Management, Safety Approvals, Risk Managers

Inspectors, Schedulers, Doc Controllers, Environmental Monitors, 3rd Party Coordinators, Site Safety

Program Management Support Services



Programs are comprised of multiple, interrelated projects towards a common aligned goal. They are typically longer in duration than projects and produce strategic “Outcomes” rather than “Deliverables”.

Who Are Our Clients



- **VTA** | BSV2 and lots more coming up. Looking for opportunities to partner
- **Caltrans** | We are going after many this year and next. Mentor Protégé: Central, Bay, D1, 2 & 3
- **BART** | We have two prime contracts - \$12m SBE & \$5m DBE. Will go after another GEC contract next year, unofficial MP
- **LA Metro** | 2 Prime contracts – I-605 and Soundwall
- **San Joaquin Regional Rail** | 3 Prime Contracts – North, South and Central
- **Cities and Local Transportation Authorities**
- **Department of Toxic Substances Control (DTSC)**



What are we looking for from S/DBEs

- Inspectors
 - Construction, Civil, Electrical, Structural, Track, Traction Power, Signals
- Office Engineers
- Field Engineers
- Biologists
- Project Controls Specialists



2019 ENR TOP 100



Ghirardelli
ASSOCIATES

**Top Construction
Management-for-Fee Firm**

Ranked #54

- Rank 55 out of 100 Nationally
- Rank 16 out of 29 CMs Nationally
- Rank 3 in Bay Area
- Rank 5 out of 8 in CMs in California

Contact:

outreach@ghirardelliassoc.com

pbews@ghirardelliassoc.com

Thank You!



Ghirardelli
ASSOCIATES



Working with HNTB



BOC Meet the Primes
October 21, 2021

HNTB



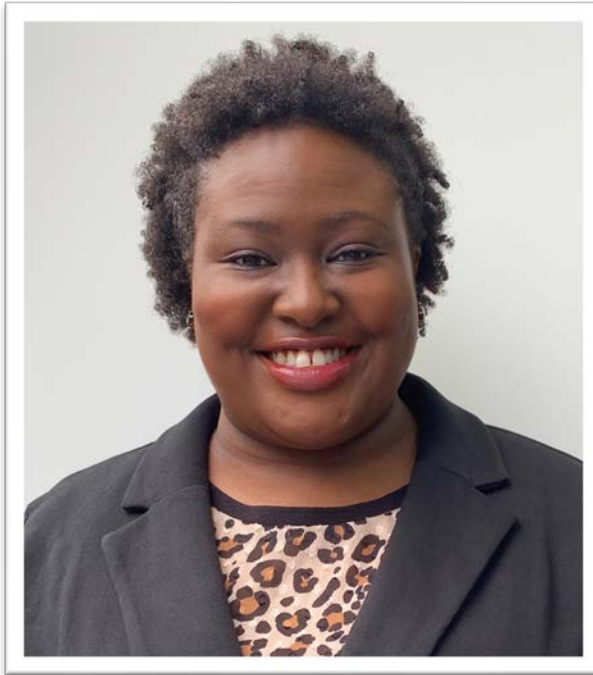
- Introductions
- Markets and Services
- Upcoming Contracting Opportunities
- Small Business Outreach Event
- Contact Information



Agenda

Working with HNTB

Introductions



Mydria Clark
Supplier Diversity Manager



Erik Okada, PE, SE
Group Director – *Structures*

Markets and Services

Regional Clients



Markets

- Airports
- Bridges
- Highways
- Transit and Rail

Services

- Program Management
- Architecture
- Environmental Planning
- Engineering
- Construction Management
- Design Build
- Tolling/ITS/Emerging Mobility Solutions

Upcoming Contracting Opportunities

Regional Clients



NAICS Codes and Services Needed

NAICS Code	Description
541310	Architectural Services
541320	Landscape Architectural Services
541330	Engineering Services (e.g., electrical, mechanical, traffic)
541340	Drafting Services
541360, 541370	Geophysical Surveying and Mapping Services
541380	Geotechnical Testing Laboratories or Services
541611	Administrative Management and General Management Consulting Services (e.g., document control, project controls, cost estimating, scheduling)
541620	Environmental Consulting Services
541690	Hydrology Consulting Services
541820	Public Relations Agencies (e.g., public outreach, stakeholder engagement)

Small Business Outreach Event



HNTB


NORCAL
SMALL BUSINESS
OUTREACH EVENT

HNTB invites you to join us in this virtual event to meet our staff, present your firm's qualifications, and explore potential opportunities to team with HNTB on transportation infrastructure projects in Northern California.

WHEN: Thursday, November 11, 2021
TIME: 3:30-4:30 PM PST
WHERE: Virtual

Please complete the **RSVP form** to receive a link to this virtual event.

Link to RSVP form: <https://forms.gle/eNaMaYJqTMbye7sD9>



Mydria Clark
Supplier Diversity Manager
HNTB Corporation
myclark@hntb.com
(510) 587-8625

Erik Okada, PE, SE
Group Director – *Structures*
HNTB Corporation
eokada@hntb.com
(510) 587-8626

**Thank
You**

Increasing Disadvantaged Business Enterprises (DBEs) and Small Business Enterprises (SBEs) teaming opportunities

Bernardo Hernandez

Bernardo.Hernandez@Jacobs.com

October 21, 2021

Jacobs

Over
400

Northern California
Staff

Local Offices

- » San Jose
- » Oakland
- » San Francisco

Outstanding Track Record

Delivering Projects in
Northern California

Integrated Delivery

- » Roadway and
Safety Design
- » Transportation
Technology
- » Environmental

Jacobs at a Glance

Services Planning, engineering, design, program management,
and construction management

**Year
Founded** 1947

**Annual
Revenue** \$13 billion

**Number
and Size
of Offices** 300 offices in
40+ countries

**Number of
Employees** 52,000+ worldwide;
602 local employees
*(Fresno, Sacramento,
Oakland, and San Francisco)*

Engineering News Record (ENR) Ranks

- #1 Top 500 in Design Firms
- #2 Transportation U.S.
- #1 Mass Transit and Rail
- #2 Highways

111_COF_BMBNSF_1_IRV

Our values



Our values are the fundamental tenets shared across our organization and the standards we hold ourselves to.

We do things right.

We always act with integrity — taking responsibility for our work, caring for our people and staying focused on safety and sustainability. We make investments in our clients, people and communities, so we can grow together.

We challenge the accepted.

We know that to create a better future, we must ask the difficult questions. We always stay curious and are not afraid to try new things.

We aim higher.

We do not settle — always looking beyond to raise the bar and deliver with excellence. We are committed to our clients by bringing innovative solutions that lead to profitable growth and shared success.

We live inclusion.

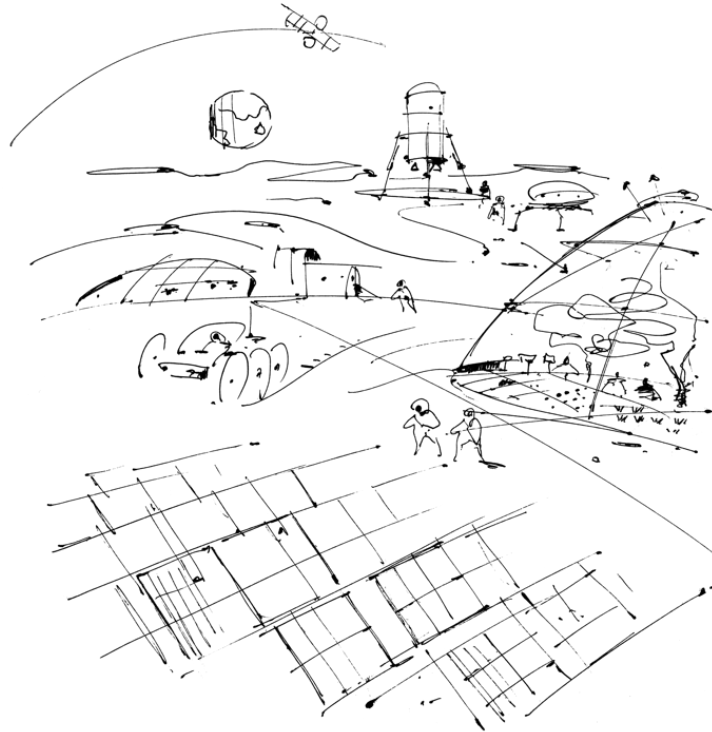
We put people at the heart of our business. We have an unparalleled focus on inclusion with a diverse team of visionaries, thinkers and doers. We embrace all perspectives, collaborating to make a positive impact.

Differentiating our Lines of Business

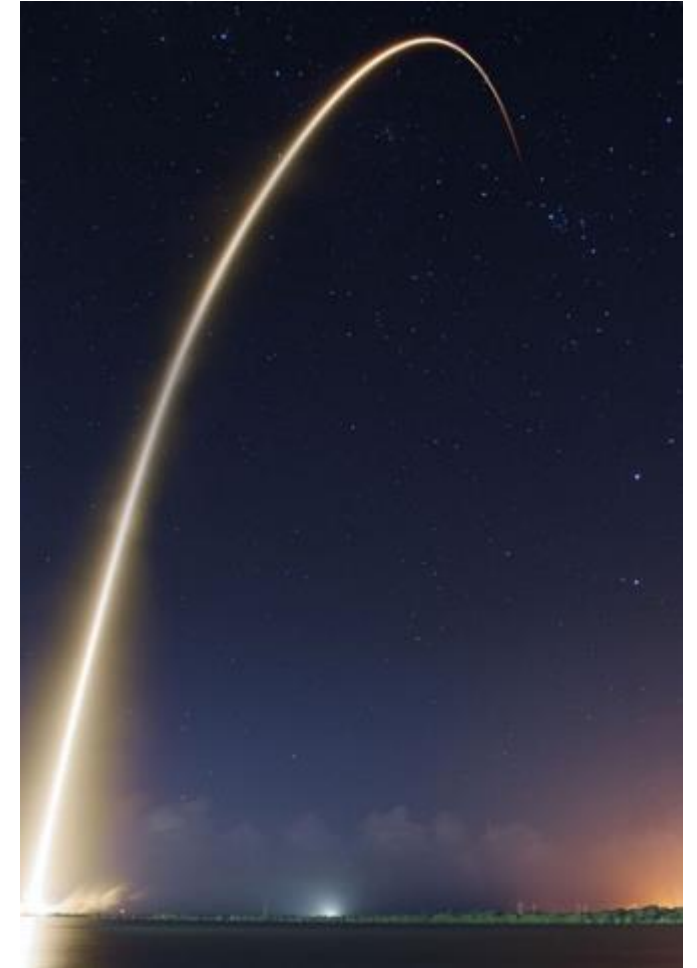
People & Places Solutions



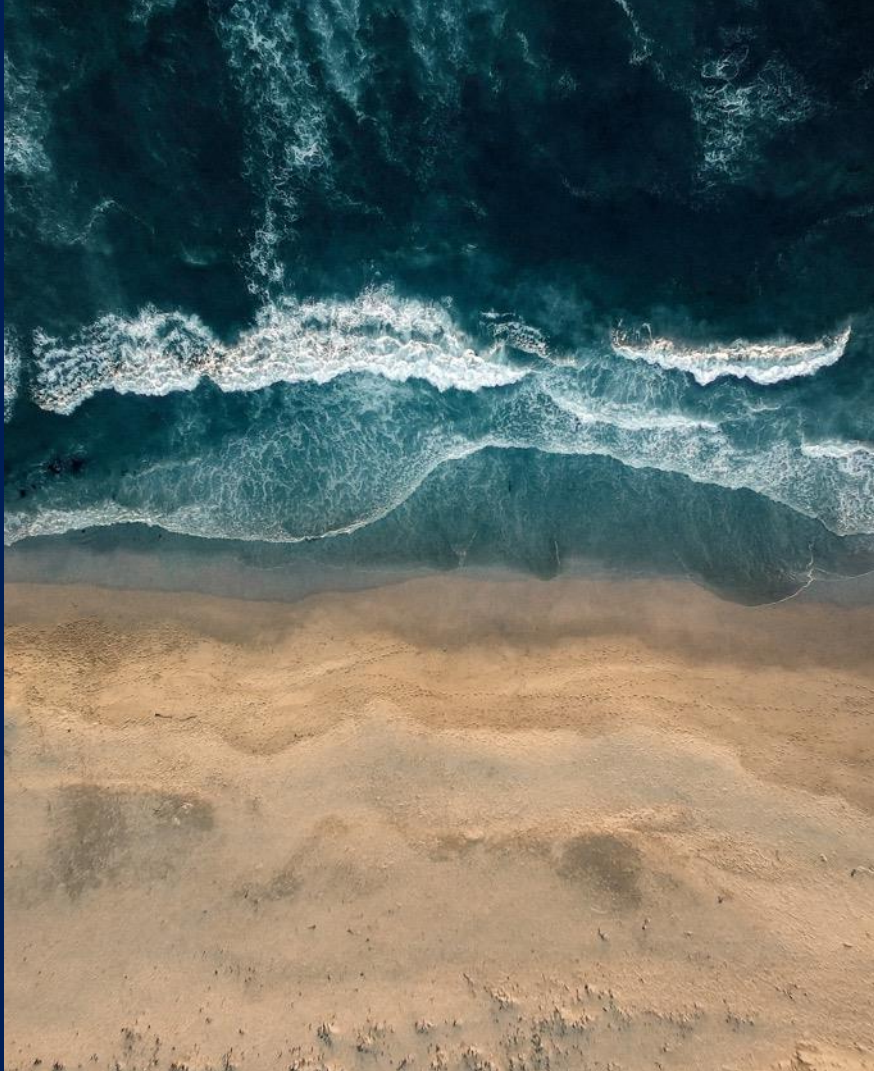
We deliver valued solutions that lead to meaningful outcomes. Our work and expertise reach across geographies and markets, uniquely positioning us to be more innovative and effective in all we do.



Critical Mission Solutions



People & Places Solutions



P&PS Core markets:

- Transportation
- Water
- Built Environment
- Environmental
- Advanced Facilities
- Health

The Scale of the Opportunity

Planned spend of **\$68.5 trillion** on infrastructure projects globally from 2020 to 2040*.



Worldwide

\$68.5T



Energy
\$22.3T



Telecommunication
\$6.8T



Transport
\$34.5T



Water
\$5.0T

*Source: Global Infrastructure Hub

We grow communities and our business through partnerships with diverse suppliers to advance economic inclusion and community wealth building

Jacobs SEI Policy Priorities: Our Business, Our Clients & Our Suppliers

- Delivering social-economic value as we deliver our core services
 - Building our operational capability and business processes to effectively respond to client's social, economic requirements and expectations
 - Creating a diverse, sustainable and ethical supply base while growing the capabilities and capacity of local, small and diverse businesses
 - Spurring economic growth and vitality in underserved communities by working with minority- and women-owned businesses to ensure equitable distribution of capital investments in infrastructure
-

Expanding Our Reach

Be intentional about searching beyond our DBE / SBE network to select new, multi-discipline suppliers



Revisioning Mentor Protege

Meaningful engagement to help DBE/SBE's grow and expand their capacity and capabilities

- **Upskilling and expanding technical capabilities**
 - **Recruiting and hiring local resources**
 - **Grooming subconsultants to position as primes**
-

Questions



Thank You

Bernardo Hernandez

Bernardo.Hernandez@Jacobs.com

Jacobs

Challenging today.
Reinventing tomorrow.





New York
NEW YORK

Boston
MASSACHUSETTS

Washington
DC

Nelson\Nygaard

Business Outreach Committee

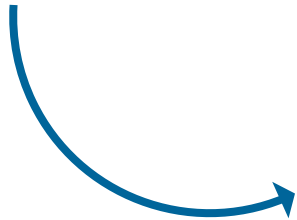
Meghan Weir

October 2021

N NELSON
NYGAARD

Developing transportation systems to promote broader community goals of mobility, equity, sustainability, health, and economic development

We Put People First



Transit



Transit Corridors



Active Transportation and Safety



Cities and Streets



Parking and Demand Management



Paratransit and Community Transit



Emerging Mobility



Engineering and Design

- Follow the guidelines of the procurement process
- Current and valid DBE certification as the potential client requires
- Reach out to NN for specific proposals



- NN started as a DBE!
- Advance opportunities, support local equity and development initiatives
- Seek meaningful roles in project teams
- Partner to expand capacity, share resources
- Build relationships



- Follow grant funding leads
- Partner with community-based organizations
- Keep in touch with favorite clients and partners
- Keep in touch with Nelson\Nygaard teams



Thank you!

Meghan Weir

mweir@nelsonnygaard.com

Navigating the Historic Preservation Highway



Pacific
Legacy

Historic
Preservation

Who we are

- 3 offices (California and Hawaii)
- Archaeologists (Prehistory/History)
- Historians
- Ethnographers
- Archaeologists, Lab
- Business Development Manager
- Administrative Support



- Samantha Schell, B.A.
- Business Development Director
 - 20+ years experience
 - Archaeology
 - Human and non-human remains analysis
 - Marketing
 - Teaming
 - Business Development

What is Cultural Resources Management (CRM)?

CRM is the managing of historical places of archaeological, architectural, historical, and spiritual interest and considering such places in compliance with environmental and historic preservation laws.

Cultural resources:

- Are vestiges of our collective heritage;
- Contribute to a sense of place and cultural identity;
- Possess scientific, educational, recreational, aesthetic, and spiritual values; and
- Are finite, fragile, irreplaceable, and non-renewable.

Cultural resources have the potential to tell us about who we are and where we came from. Once they are gone they are gone forever.

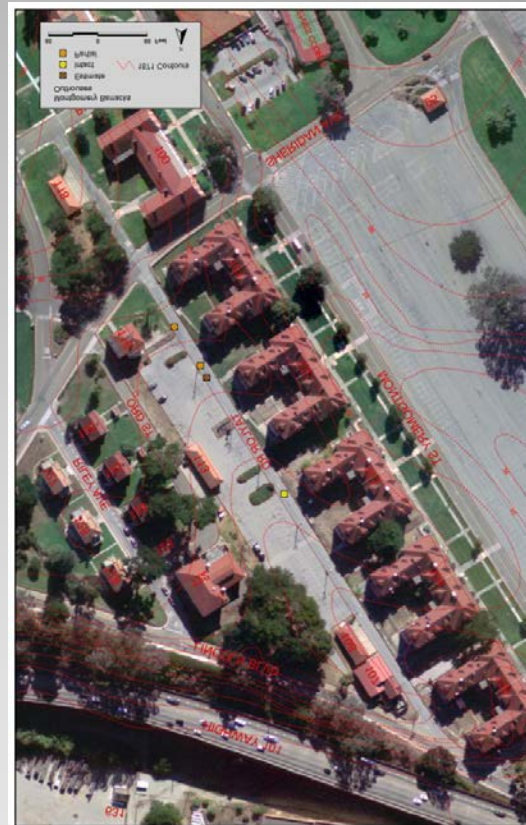
Why should I care?

And furthermore...

- It is the law for many undertakings/projects and includes the application of Federal, State, and local laws for historic preservation.



- Archaeological Resource Protection Act
- National Historic Preservation Act of 1966
- Section 106 of the NHPA
- Regulations – 36 CFR 800
- Other laws apply to Federal lands
- National Register of Historic Places (NRHP)
- NEPA



Presidio of San Francisco

Federal

- California Environmental Quality Act (CEQA)
- PCR 2100
- CCR Title 14, Section 15000 et seq
- PRC Section 5024 and 5024.5 (impacts)
- California Register of Historic Places



State Laws

Lets add to the mix

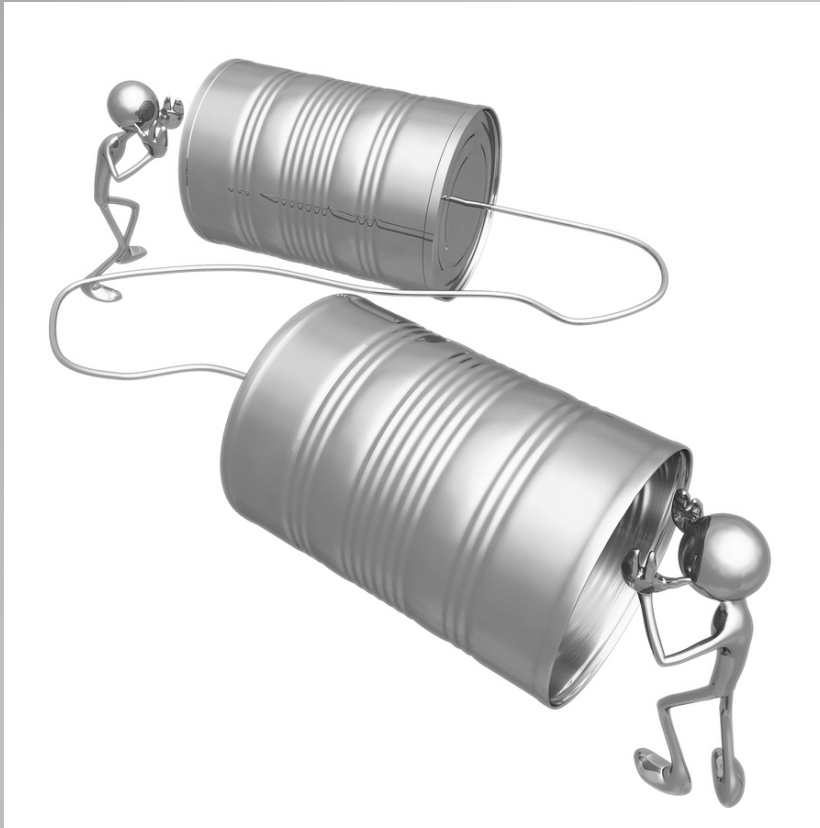


- CEQA/SHPO
 - CPUC
 - CEC
 - State Parks
 - Hawaii General Rules
 - Caltrans
 - BLM
-
- Virtually every agency has their own set of rules for doing things



- Physical destruction or alteration
- Isolation
- Introduction of elements out of character
- Neglect
- Transfer sale or lease

What is an Impact?



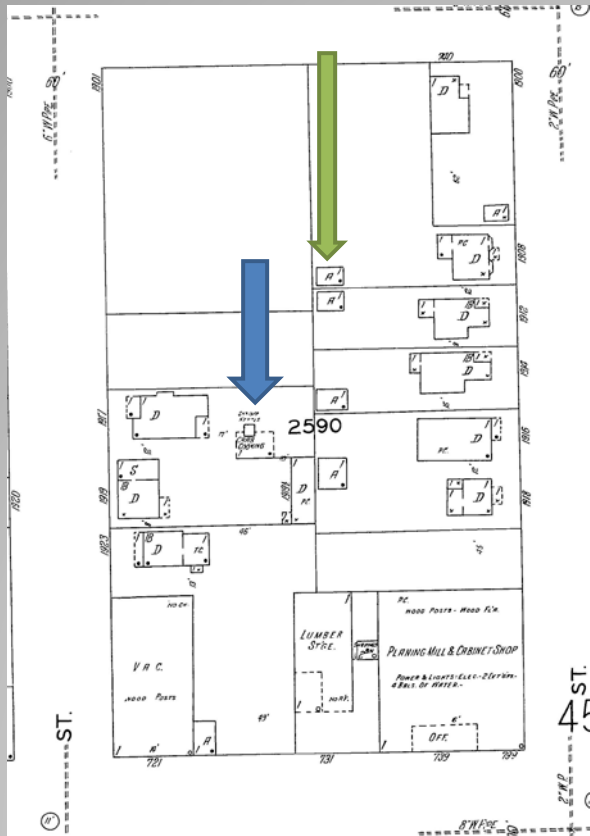
- Identification
 - Do I have resources in my project area?
 - Identify Stakeholders
- Evaluation
 - Historical Resources
 - Significant Resources
 - Historic Properties
- Treatment
 - Avoidance
 - Mitigation

Three step process



Solar Project, Lake County

Project Planning



Camp A.E. Wood in 1891.

Buffalo Soldier Camp, Yosemite

Sanborn Maps

Historic Research



Native American Bedrock Mortars, Kern River

In Field Identification



Spotty

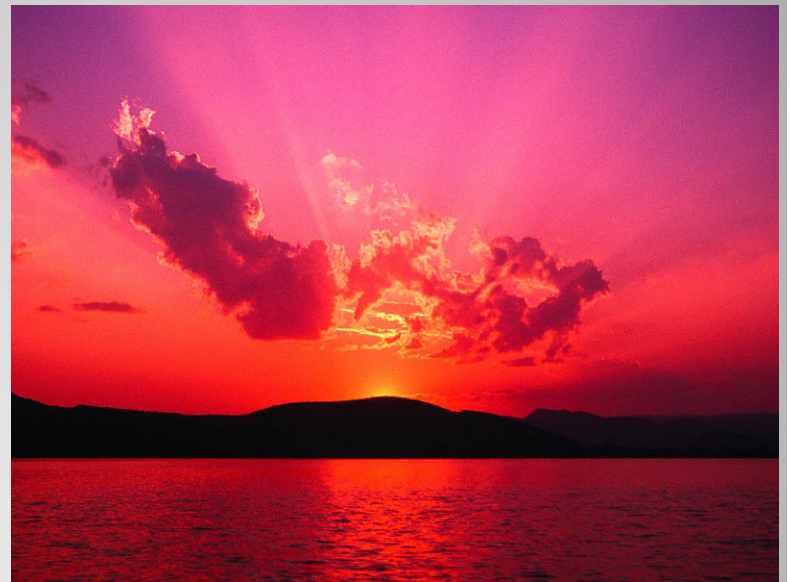
- Determine if you have resources in your project area
- Are they eligible for the CRHR or NRHP?
- Are they significant sites?



1860s Debris Scatter, Sierra

Identification

- No further management of resources
- Proceed with project
- Historic preservation responsibilities have been completed



No Resources Identified in Initial Studies



TRTP Transmission Line

- Literature review information is not enough to determine if resources are CRHR or NRHP eligible
- Extended Phase I Report (XPI) suggests resource CRHR or NRHP eligible but not sure
- Complete Formal Evaluation

Sometimes you have to dig a little deeper.....



Historic Roadway, Marin Headlands

Hmmmm...Is it, or isn't It.....

What happens if I do have a CRHR or NRHP Resource

- Generally come up with Treatment Plan
- Consult with Stakeholders
- If resource can't be avoided, its effects will have to be mitigated



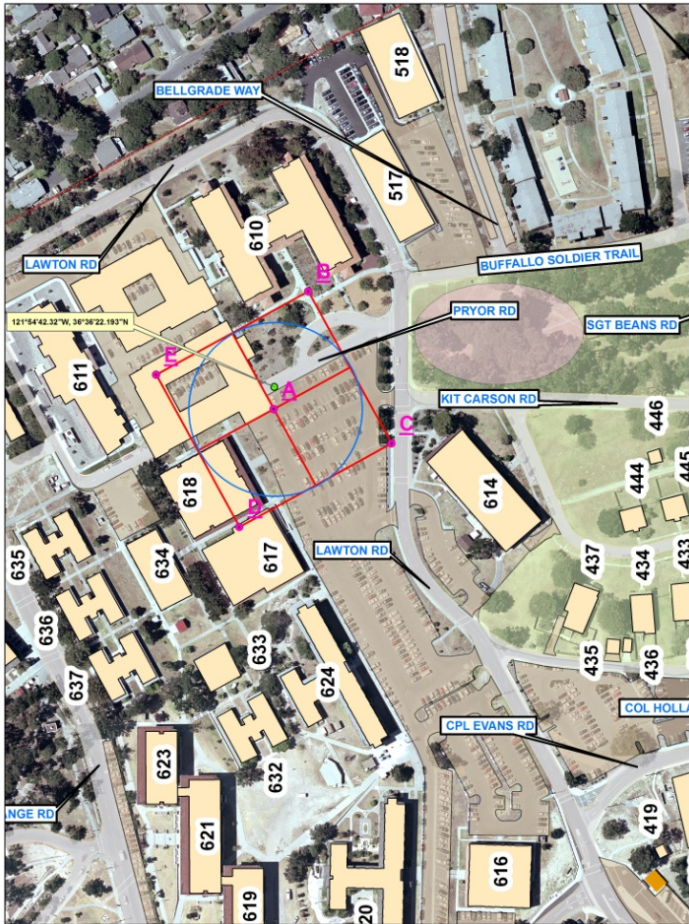
Nu'pia Fishpond Restoration,
Oahu

- Management Plans
- Historic Properties Treatment Plan (used where site is presumed or determined eligible for the NRHP, federal)
- Historical Resources Mitigation Plan (non-federal)
- Programmatic Agreement
- Memorandum of Agreement

Management/Treatment Documents

- Consult with Stakeholders
- Make sure you know the agency's requirements
- Early consultation with historic preservation specialist during design
- Early consultation on agreement documents, clearly identify needs
- Try not to lose sleep

Not as formidable as it seems



GIB11 - Inadvertent Archaeological Discovery
 Monterey, Ca

Legend
 Site Corners

150 75 0 150 Feet
 Current as of: Aug 2011
 Date Approved: Sheet Number 1 of 1

Place... Presidio of Monterey, Cal. March 1st, 1905. Q.M.G.O. Plan No., Building No. 110.....

Designation of Building... ^{CHIC ADMINISTRATION OFFICE} Capacity,
 Construction: Cost \$200.00., Date... 1903.....
 Material: Walls. Frame... Foundations..... Wood.....
 Roof * Shingle... Floors..... Wood..... How heated
 Stoves... (..sq ft. rad.), How lighted. Electricity.
 Provided with: Water connections....., Sewer connections.....
 Water Closets No., Urinals No., Wash Sinks No., Wash Basins No., Laundry Tubs No., Baths; Shower No., Tubs No., Screens....., Storm Sash...., Storm Doors....., Wall Lockers No....., Total floor area above basement sq. ft. 664.....; Dimensions, Main Building 20'4" x 35'4"..... Wings....., Each & every room arranged by floors;
 1st floor: 1R, 19'x23' 1R, 11'x19'



Repairs.

Below enter chronologically all modifications, additions, introduction of water, sewer, electric light, etc., since Moh. 1st, 1905. *As changed from original description 7/1/22 # 2254
 DESIGNATION CHANGED LETTER 600.9 7/5/38

Yr. ending	Expend to date	Yr. ending	Repairs.
3-1-22	\$ 15.50	3-1-06	\$.....
" 3-1-23	" 11.75	3-1-07	\$.....
" 3-1-24	" 89.00	3-1-08	\$.....
" 3-1-25	" 44.50	3-1-09	\$ 10.00
" 3-1-26	" 91.90	3-1-10	\$ 1.75
" 3-1-27	" 139.47	3-1-11	\$ 5.07
" 3-1-28	" 71.75	3-1-12	\$ 26.27
" 3-1-29	" 250.92	3-1-13	\$ 1.00
" 3-1-30	" nothing	3-1-14	\$ 126.10
" 3-1-31	" nothing	3-1-15	\$ 58.00
" 3-1-32	" 36.20	3-1-16	\$ 2.60
" 3-1-33	" 26.85	3-1-17	\$ 5.00
" 3-1-34	"	3-1-18	\$ 15.00
" 3-1-35	" 174.00	3-1-19	\$ 10.60
" 3-1-36	"	3-1-20	\$ 12.00
" 3-1-37	"	3-1-21	\$ 11.75

Presidio of Monterey



Extended Phase 1-



Figure 1. Archaeological Trench Locations at General Instruction Bldg. 11, Presidio of Monterey, USDA NAIP 2009.



1923 Army Privy (3 Seat), Stanford Campus

ST. HELENA FLOOD CONTROL

- Records Search (Five Sites)
- Intensive Surface Survey (1,520 artifacts, three New Sites, and four new isolates)
- 42 Auger Bores (depth and deposit info for four sites)



NEXT STEPS

Four Sites
Determined Not
Eligible
And

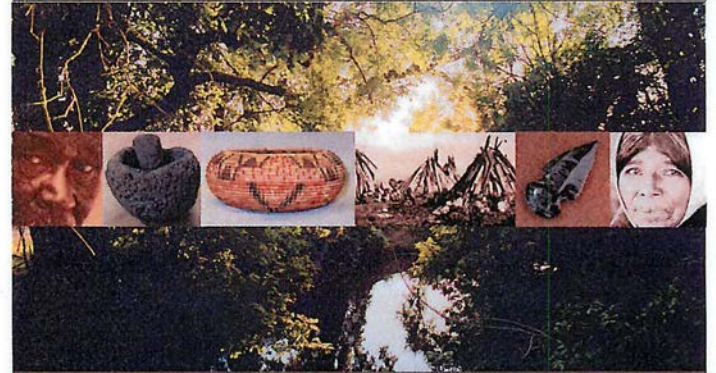
Four Sites
Determined Need
For Further Study

PUBLIC OUTREACH COMPONENT



OUR FIRST PEOPLE

Early Habitation in the St. Helena Area
Presented by John Holson, Tsim Schneider,
and Lori Hager, Pacific Legacy Inc.



Presentation & Exhibit Reception
Thursday, February 7th, 7:00 pm

Co-sponsors

St. Helena Historical Society
St. Helena Public Library
1492 Library Lane, St. Helena



St. Helena Data Recovery

- Lithics (Stone tools)
- Groundstone (mortars, pestles)
- Osteology (162 sets of human remains – one site only)
- Faunal Bone (shell, large and small mammal, etc.)
- PaleoBotanical (hearths with seeds, charred wood)
- Architecture (stone layered floors)
- Worked and inscribed bone



Fire Pit and Obsidian Feature

Defines What is a Site

**Allowed for Form Reporting in
Some Instances Rather than Full
Report**



Inventory and Evaluation

- Appendix K for Can Scatters



- Peer Reviewed Documents (CPUC)



Expedited Management

FEMA and Caltrans Fire Work – Carr, Mendocino Complex, Delta, Beckwourth, Dixie North and South, Caldor Fires



Fire Recovery and Restoration

Prequalification?

- Not a requirement

Contact Information:

Samantha Schell
schell@pacificlegacy.com
510-812-8699

DBE/SBE

- We have seven DBE firms on our Caltrans 1, 2, 3 on-call.
- We can help answer questions by DBE firms looking to get onto contracts

Thank you!



COLLABORATION FOR INNOVATION

Parsons (NYSE: PSN) is a leading provider of critical infrastructure planning, design, project and construction management, and construction.

- Transit
- Rail
- Highway
- Structures
- Active Transportation
- Ports & Maritime
- Aviation
- Water/Wastewater

California at a Glance:



12 Offices



1, 280 Employees



**CALIFORNIA HIGH SPEED RAIL AUTHORITY
CONTRACT PACKAGE 1
FRESNO, CA**



**METRO PURPLE (D) LINE EXTENSION
PHASE 1 DESIGN-BUILD
LOS ANGELES, CA**



**BART TRAIN CONTROL MODERNIZATION
PROGRAM DSDC
OAKLAND, CA**



**CALTRANS GENERALIST ON-CALL SERVICES
CONTRACTS - DISTRICT 6 and 9
FRESNO and BISHOP, CA**



**TRANSBAY JPA DOWNTOWN EXTENSION
GENERAL ENGINEERING CONSULTANT
SAN FRANCISCO, CA**



**LAWA LANDSIDE ACCESS MODERNIZATION
PROGRAM & CONSTRUCTION MGMT SERVICES
LOS ANGELES, CA**



**CALTRANS D59 CONSTRUCTION ENGINEERING
& INSPECTION SERVICES FOR D 1, 2 & 3
SACRAMENTO, CA**



**I-405 IMPROVEMENT PROJECT (SR-73 TO I-605)
PA/ED AND DB PROGRAM MANAGEMENT
ORANGE COUNTY, CA**



**FOOTHILL GOLD LINE LIGHT RAIL EXTENSION
PHASE 2A DESIGN
LOS ANGELES, CA**

BECOME A PARSONS PARTNER

- Successful projects require meaningful partnerships with organizations and individuals that augment or complement our products and services.
- Parsons values the teamwork and contributions of diverse suppliers in the delivery of innovative, world-class solutions to our clients.
- The goal of partnership-strategy is to ensure that the right people and resources are in the right place at the right time.

Contacts:

Michele DiFrancia, AICP
Business Development (NorCal)
P: +1 510.282.5216
E: Michele.Difrancia@Parsons.com

Indu Menon
Program Director (NorCal)
P: +1 415.205.8491
E: Indu.Menon@Parsons.com



We pursue the following contract types:

- Project Deliveries: DBB, DB, PDB, CMGC, P3
- Environmental Planning
- Environmental Assessment/Investigation
- Multidisciplinary Engineering Design
- Transportation Planning
- Program/Project Management
- Construction Management

We subcontract the following disciplines/services:

- Admin, Contract Administration, Invoicing
- Biology
- CADD/BIM
- Comment Response Management
- Cultural Resources
- Document Control
- Drainage Design
- Drone Photography
- Electrical Design
- Environmental Assessment
- Fiber Communication
- Systems Design
- Geotechnical Analysis
- GIS
- Grant Writing
- Hydrology/Stormwater
- Inspection (Multidisciplinary)
- Landscape Architecture
- Maintenance of Traffic
- O&M Estimating
- Office Engineering
- Paleontology
- Partnering
- Printing
- Project Controls
- Public Funding Identification
- Public Outreach
- Right-of-Way Mapping
- Risk Management
- Schedule/Earned Value
- Tracking
- Security
- Station MS&E
- Structural
- Subsurface Utilities
- Survey
- Third-Party Coordination
- Traffic Analysis
- Urban Planning and Design
- Utilities Mapping & Design

How to do Business



***Alva Carrasco, Transit & Rail Regional Mgr.
Arlene Macahilig, PMCM Marketing Manager***

Overview

Introduction to WSP

- *Who we are*
- *Full Spectrum of Professional Services*

Doing Business with Subcontractors

Supplier Registration Portal

WSP

Who we are


OFFICES IN
NORTHERN
CALIFORNIA:

- ❖ San Francisco
- ❖ Oakland
- ❖ San Jose
- ❖ Antioch
- ❖ Sacramento

30+
YEARS IN
NO. CA

12,000 
EMPLOYEES
IN THE U.S.

55,000
EMPLOYEES
WORLDWIDE

2,500 
ENGINEERS
IN THE U.S.


133
YEARS IN
THE U.S. 

400 
PLANNERS IN
THE U.S.

300 
CONSTRUCTION
MANAGERS IN THE U.S.

MULTIDISCIPLINARY FIRM


PLANNING


ENGINEERING

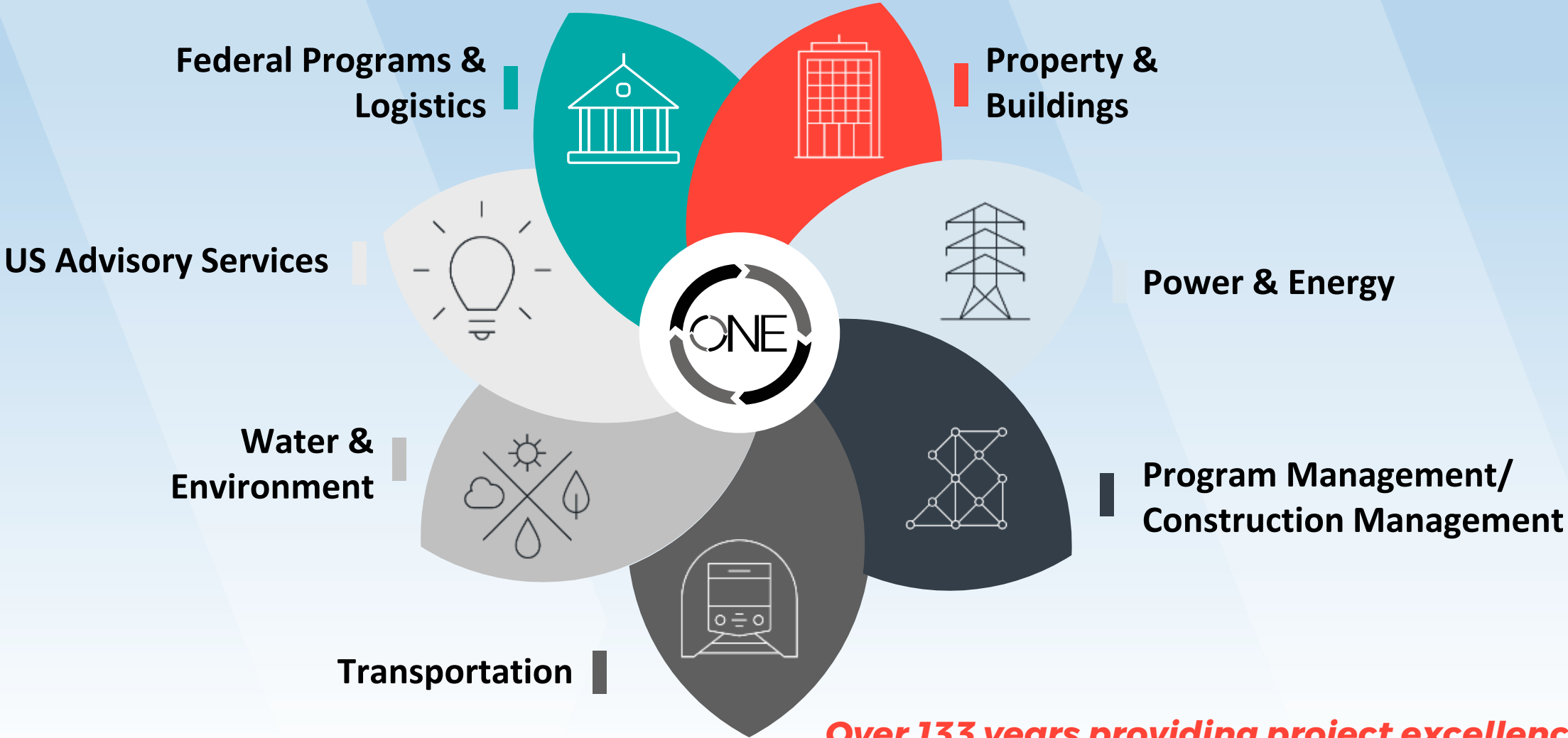

DESIGN


CONSTRUCTION
MANAGEMENT

wsp

WSP Offers

Full Spectrum of Professional Services



Over 133 years providing project excellence

Example Local CM Projects



AC TRANSIT EAST BUS RAPID TRANSIT (BRT)



BATA/MTC ON-CALL CM: WEST GRAND, PHASE I



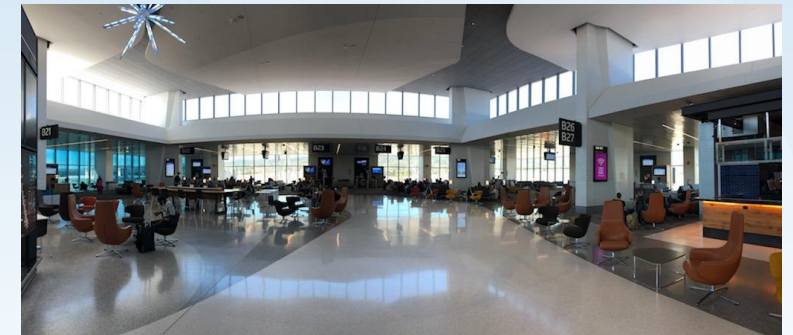
CCTA I-680 HOV LANE COMPLETION AND EXPRESS LANE CONVERSION



BATA RICHMOND/SAN RAFAEL BRIDGE ACCESS IMPROVEMENT



SFCTA YBI WESTBOUND RAMPS

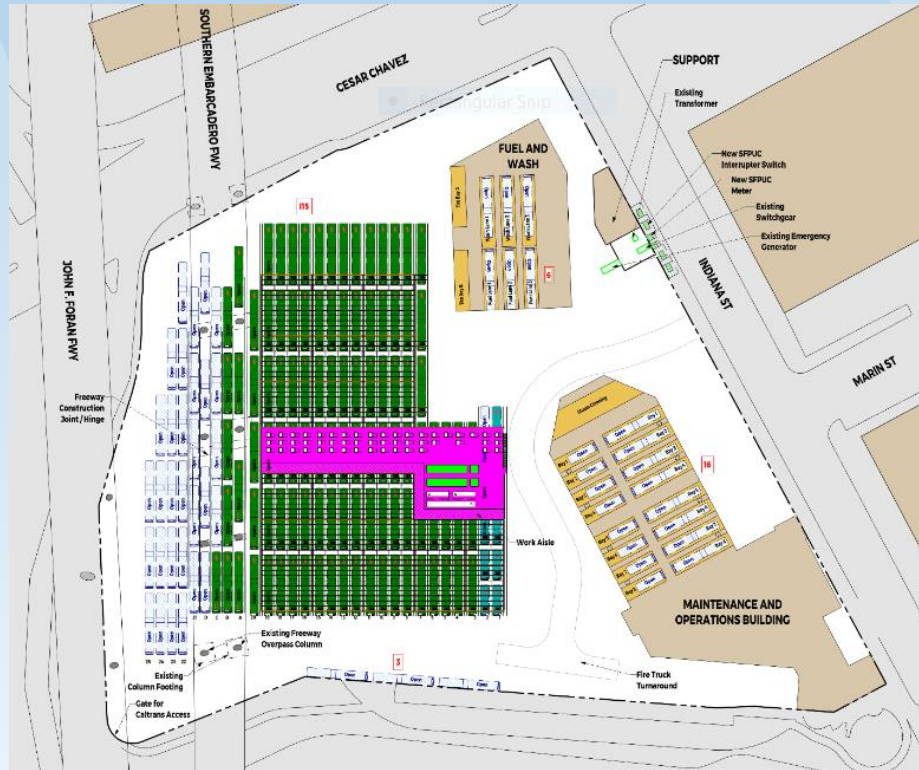


CITY/COUNTY OF SAN FRANCISCO SFO BOARDING AREA B PMSS

Example Local ZEB Projects



SOLTRANS CURTOLA PARK & RIDE INDUCTIVE CHARGER



SFMTA ZEB FACILITY & FLEET TRANSITION PLAN



SOLANO TRANSPORTATION AUTHORITY SOLANOEXPRESS INDUCTIVE CHARGING NETWORK

SBE/DBE SUBCONSULTANTS

WORK CODES

- C8733 – Construction Engineering & Inspection
- C8770 – Construction Management
- C8773 – Construction Management – Highway, Street, Bridge Construction

NAICS CODES

- 541320 - Landscape Architectural Services
- 541330 - Engineering Services (e.g., electrical, mechanical, traffic)
- 541360/541370 - Surveying and Mapping Services
- 541380 - Geotechnical Services
- 541611 – Administrative Management & General Management (Project Controls, Document Control, Cost Estimating, Scheduling)
- 541620 - Environmental Consulting Services (SWPPP, QSP/QSD)
- 541820 - Public Outreach, Stakeholder Engagement
- 541380 – Testing Laboratories

DOING BUSINESS WITH SUBCONTRACTORS

wsp
U.S. SUPPLIERS



Supplier Registration

WSP USA maintains a strict policy of only working with businesses who achieve and maintain approved status in our Supplier Registration system. To achieve approved status, you must **complete and submit an application**.

If new registrants start the process with all the necessary information, the application takes approximately 45 minutes to complete. You may start an application, save it, and resume the process later. To ensure that your business meets our minimum standards, all submitted applications are reviewed by our U.S. Compliance and Ethics Team. Applications submitted during normal business hours are generally reviewed within 48 hours.



[Start or maintain an application.](#)

[Introduction](#)

[Commitment to Small Business Program](#)

[▶ Supplier Registration](#)

[Third Party Code of Conduct](#)

[What We Buy / Services We Procure](#)

[Subcontract Standard Terms and Conditions](#)

[Quality, Health and Safety, US Human Trafficking, and Non-Discrimination Policies](#)

[Subcontracting Opportunities](#)

[Small Business Program](#)

Supplier Registration

[HOME](#)

[SUPPLIER REGISTRATION](#)

[ONLINE DEMO](#)

[HELP](#)

[FEEDBACK](#)

Related Resources

It takes approximately 45 minutes to complete a **Supplier Registration application**

Have questions? Email prequalus@wsp.com.

WSP USA Supplier Registration System – Small/Large Business Become Prequalified To Do Business with WSP.

http://plus.wsp-pb.com/supplier_registration/



For Upcoming Opportunities

Alva Carrasco, Transit/Rail West Region Market Lead

Alva.Carrasco@wsp.com

Andy Kleiber, West PMCM Transit/Rail Lead

Andrew.Kleiber@wsp.com

Arlene Macahilig, Marketing Manager

Arlene.macahilig@wsp.com

SBE Officers Contacts

Laura Unger, Small Business Liaison Officer

Laura.unger@wsp.com

Rita Ohaya, Small Business Officer

Rita.ohaya@wsp.com